



**OVERHEAD DOORS, INC.**

---

**REDI-RESET OPERATOR  
DROP TEST AND RESET  
INSTRUCTIONS**

**MANUFACTURER OF QUALITY ROLLING STEEL DOORS**

309 NASSAU AVE., BROOKLYN N.Y. 11222; TEL: (718) 384-6100; FAX: (718) 486-6324; TOLL FREE: (800) ALPINE-4

### MODEL Redi-Reset

1. Check opening for proper width and height. If not exact, the Guide "inset" may be adjusted.

If opening is not plumb, shim wall angles. If one jamb is shorter than the other, raise wall angles until top of both angles are on the same level line.

It is extremely important that the barrel be absolutely level to prevent curtain from shafting to either side

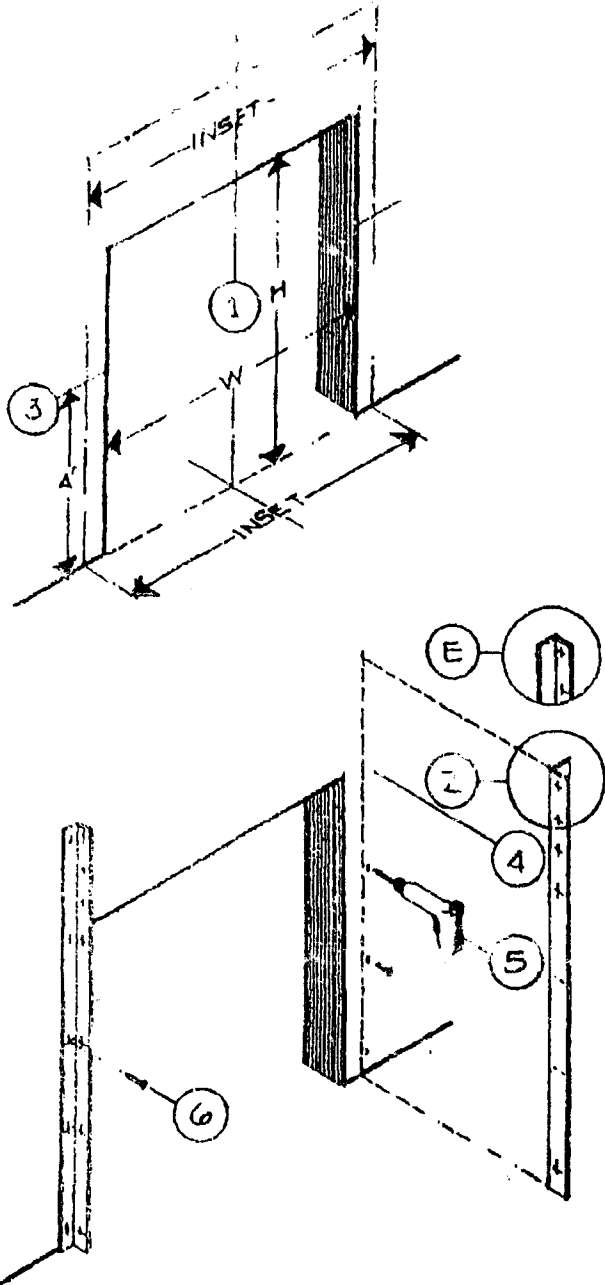
2. Measure door curtain from endlock to endlock. For doors less than 18' in width, add 1-3/4" to the endlock to endlock dimension.
  - a. For doors between 18' to 30' in width, add 2-1/2" to the endlock to endlock dimension
  - b. For doors between 30' to 45' in width, add 3-1/4" to the endlock to endlock dimension.
  - c. For doors between 45' to 56' in width, add 4- 1/4" to the endlock to endlock.
  - d. The measurement of endlock to endlock plus minimum space allowance is called the "inset"

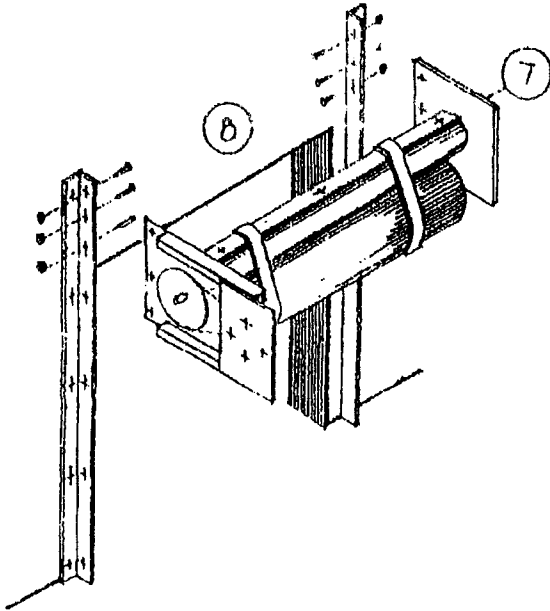
3. "Inset" refers to the distance between the wall angles as in "E" or "Z" mount (see detail). These should be centered the same distance on each side of the opening and marked off.

4. Remove guides from wall angles. Place a level mark 4' from floor on both sides of "inset" mark Mark the wall angle 4' from bottom of angle.

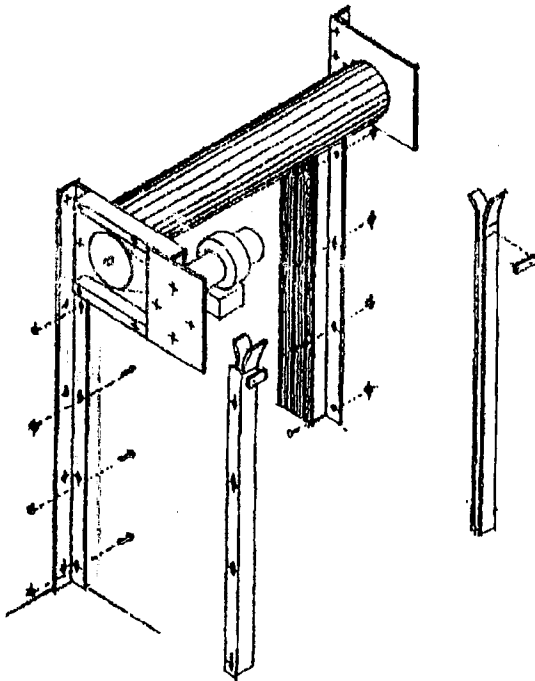
5. Place wall angle against proper face of building. Wall angles should be vertical and plumb with level marks matching, making sure that "inset" is maintained. Place marks on the walls through the holes in the wall angles to indicate where to place the anchoring bolts. Wall angles should be set 3/4" above the floor. When drilling holes in wall, place hole in center of slotted hole in wall angle.

**Note:** Fire doors can be welded to steel jambs.



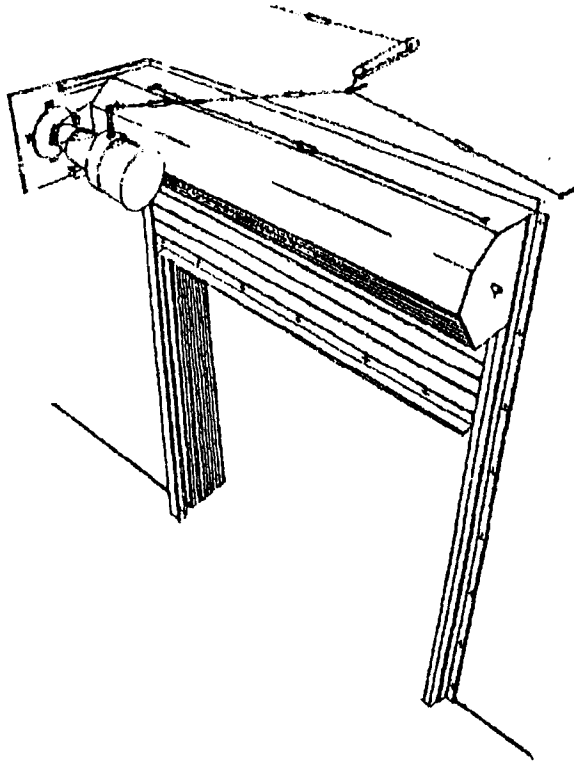


6. Remove wall angle, drill holes of a size to accommodate self-tapping bolts (for steel frame) or through bolts (for masonry). Expansion anchors may be used in solid walls. Hollow walls must utilize through bolts. If doors are mounted on only one side of the wall, crush plates are required on the other side.
7. Fasten wall angles to wall. Make sure angles are at correct height, square, and at right angle to opening.
8. Remove barrel drum and curtain from packing case. Lay on floor as an "hand" (right or left) mounting. The "gear end" refers to the end the operator goes on when you stand on the coil side of the door facing the coil. Place gear bracket on shaft on operating side of barrel.
9. With curtain facing the wall, using power jacks and two slings, raise the complete assembly to the top of the wall angles. Make sure assembly is level and barrel is free to turn. Brackets are set inside the wall angles and fastened with bolts.  
Secure the two top holes first, then line and secure the two bottom holes.
10. Once end brackets are secured to the wall angles, place two slings around the curtain and barrel. Once slings are secured, cut the banding straps and allow curtain to hang in slings.
11. Install motor on end bracket by securing bolts to bracket. Place drive shaft on door and mount motor chain. The chain tension can be adjusted by moving the motor operator in the adjustable slotted holes. Be sure drive chain is taut and all set-screws are set.
12. Connect power to the operator and hook up 3-button station (consult wiring diagram).
13. Using the motor, wind the door into the fully open position. Curtain will be wrapped around the drum.
14. With the door to the fully open position, drop the pin into the charge wheel. Do not charge the spring.
15. Close door  $\frac{3}{4}$  of the way and slide the bottom bar onto the bottom slat of the curtain.



**MANUFACTURER OF QUALITY ROLLING STEEL DOORS**

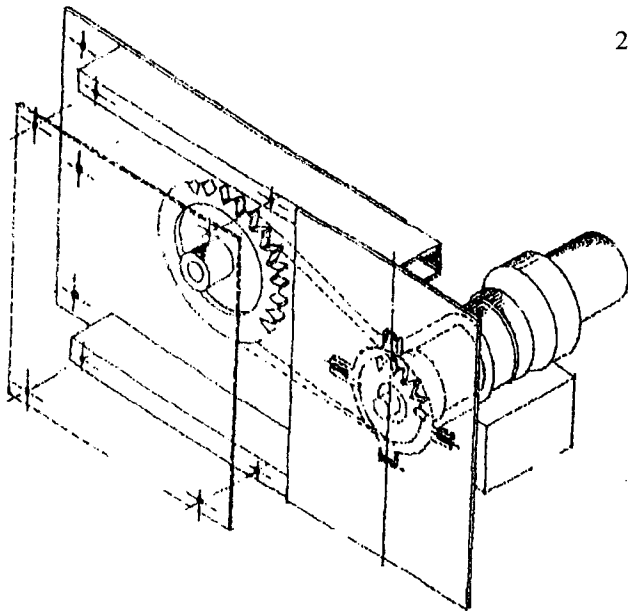
309 NASSAU AVE., BROOKLYN N.Y. 11222; TEL: (718) 384-6100; FAX: (718) 486-6324; TOLL FREE: (800) ALPINE-4



16. Replace guides on wall angles.
17. Place bolts in slotted holes. Bolts should be positioned in the bottom of the slotted hole to allow for downward expansion. When inserting bolts, be sure to use two fiber washers and two regular washers on each bolt.
18. Set bottom of curtain between guides. Replace curtain stops and tighten.
19. Install sheet metal hood using tech screws. Attach back of hood to Masonry wall using metal shields.
20. To install sash chain, connect S-hook to plunger on operator. Run sash chain across the opening and then through the wall. Three fusible links must be installed in the sash chain on the hood side of the opening. One fusible link must be installed on the through-wall side of the opening. Fusible links should be installed within 18" of the ceiling, but not closer than 6" to the ceiling.
21. Once the sash chain is drawn taut, remove cotter pin from the plunger in the operator.
22. At this point, visually inspect the door. Run the door up and down several times and adjust limit switches (see limits switch adjustment instructions attached).
23. Remove adhesive bracket reset and maintenance instructions from packing box and adhere to track guide.

Drop-test the door as per drop-test and reset instructions.

The owner as well as the installer should maintain a written record of the drop-test.



### **DROP TEST AND RESET INSTRUCTIONS FOR ALPINE MODEL “AUTO FIRE-TITE” FIRE DOORS**

**NOTE: THIS FIRE DOOR IS EQUIPPED WITH THE AUTOMATIC DROP TEST AND RESET FEATURE. NO SPECIAL TOOLS ARE REQUIRED.**

Option A To drop test the door, cut the fusible link or release the s-hook from the plunger located on the top of the operator. Once the plunger is released, the door will begin to self-close at a uniform rate of decent. (6” to 9” per second)

**To reset the door, pull plunger up and re-attach fusible link or sash chain, and push “OPEN” button on control station.**

Option B To drop test the door, cut the power to the operator by cutting off the power at the disconnect switch. Once the power has been cut, the door will begin to self-close at a uniform rate of decent. (6” to 9” per second)

**To reset the door, re-engage the power to the operator and push the “OPEN” button on the control station.**

Option C To drop test the door, send signal from the fire alarm, the door will begin to close at a uniform rate of decent. (6” to 9” per second).

**To reset the door, clear signal from fire alarm and push “OPEN” button on control station.**

**Once REDI-RESET automatically resets itself, it is automatically back in “fire” mode.**

**NOTE: ALL ABOVE OPTIONS MEET NFPA REQUIREMENTS CONSTITUTING ACTUAL DROP TEST.**