



DOCK PORT 6" C

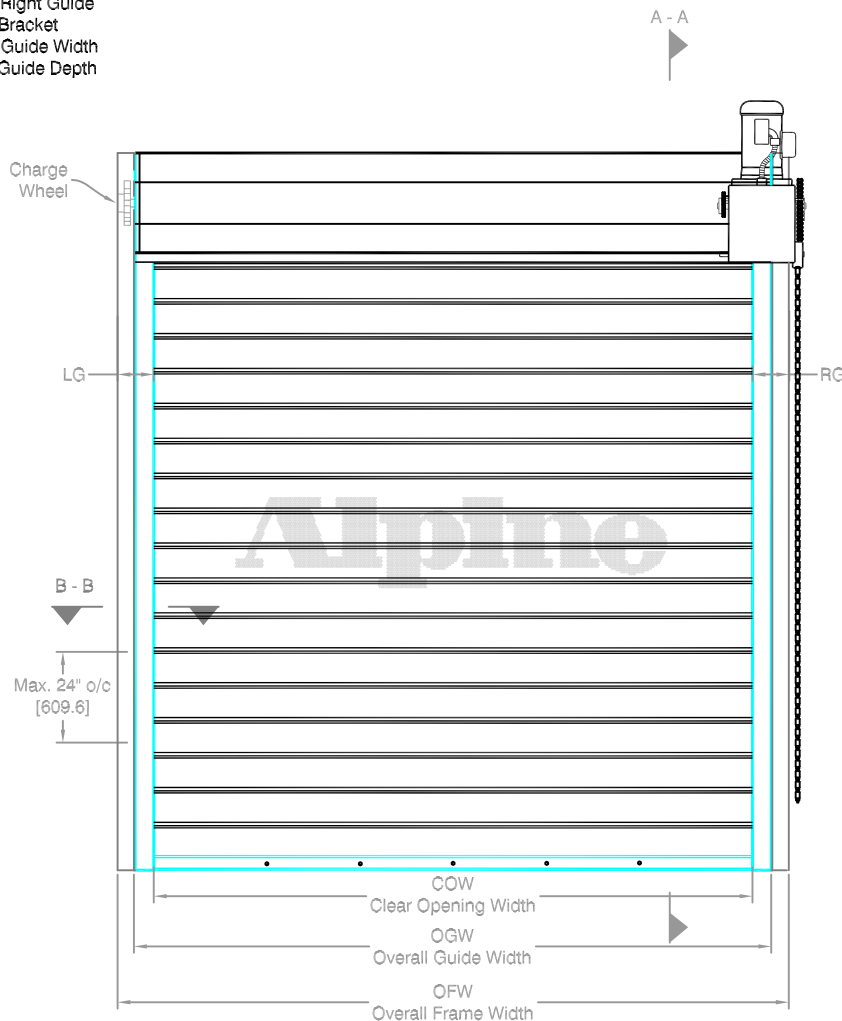
DOCK PORT 6" CURVE SLAT

Motor Operated
Face of Wall Mounted

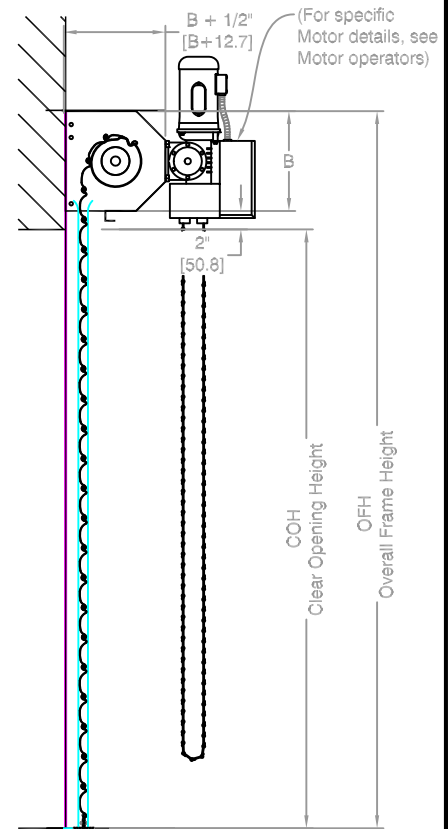
Page#:

Page 1

LG - Left Guide
RG - Right Guide
B - Bracket
GW - Guide Width
GD - Guide Depth

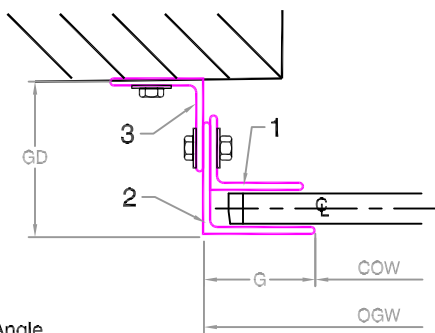


COIL SIDE ELEVATION



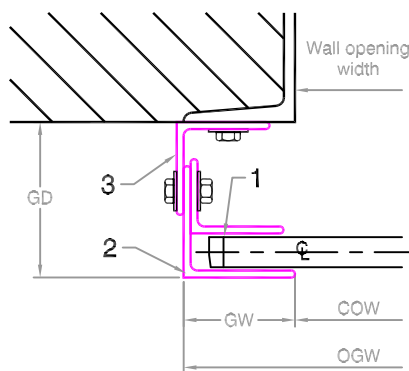
VERTICAL SECTION A - A

FACE MOUNTED TO MASONRY

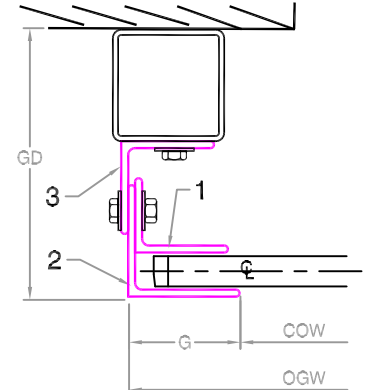


1- Inside Angle
2- Outside Angle
3- Wall Angle

FACE MOUNTED TO STEEL



FACE MOUNTED TO TUBE



GUIDE SECTION B - B

Notes:

- See page 2 for more options.
- All metric conversions of dimensions are shown in brackets [].

SALES REP:

CUSTOMER:

JOB NAME:

NUMBER:

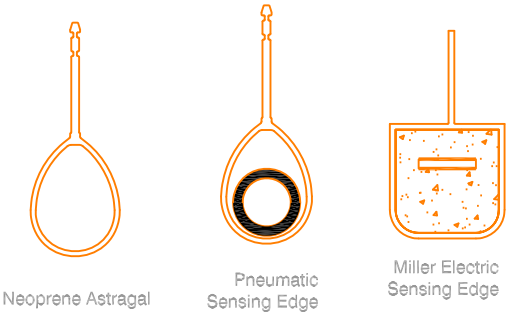
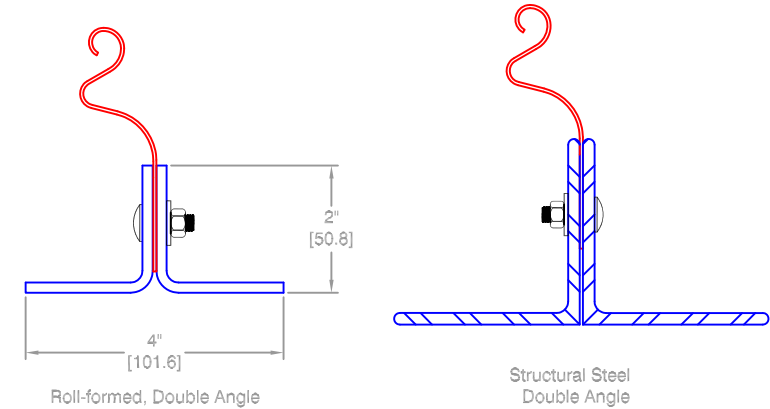
Manufactured by:

Alpine[®]
OVERHEAD DOORS, INC.

8 HULSE ROAD EAST SETAUKET, N.Y. 11733

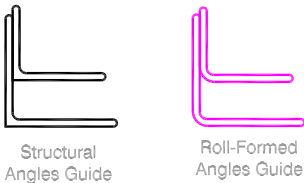
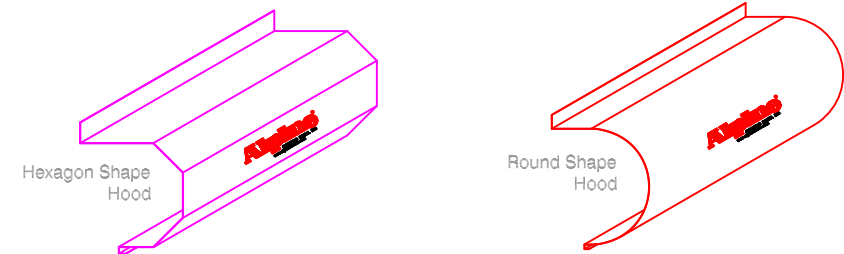
TEL: (631)473-9300 FAX: (631)642-0800

© COPYRIGHT JAN 2007



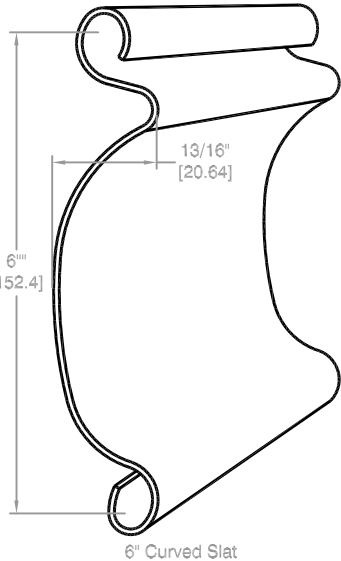
BOTTOM BAR OPTIONS

OBSTACLE EDGES AVAILABLE



HOOD SHAPE OPTIONS

GUIDE OPTIONS



CURTAIN DETAIL

Distributed By:

Call your Alpine representative for additional options and safty products to help find the best Alpine door to suit your needs.

Manufactured by:

Alpine[®]
OVERHEAD DOORS, INC.
8 HULSE ROAD EAST SETAUKET, N.Y. 11733
TEL: (631)473-9300 FAX: (631)642-0800
© COPYRIGHT MAY 2007