

Wooden Counter-Shutter Door



Wooden Counter Shutters
 Beautifying your space

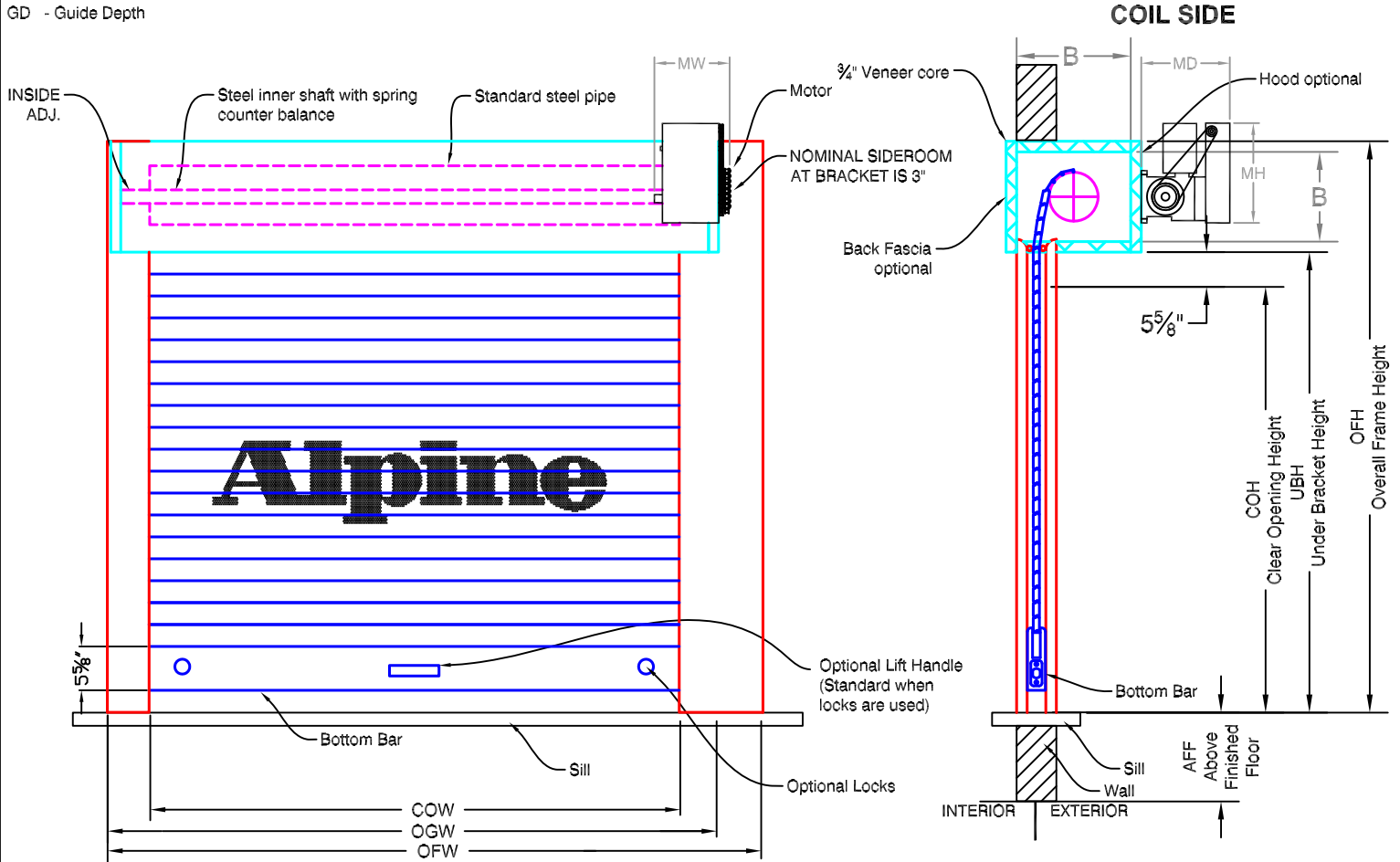
Motor Operated
 Between Jamb Mounted

Page#:

Page 1

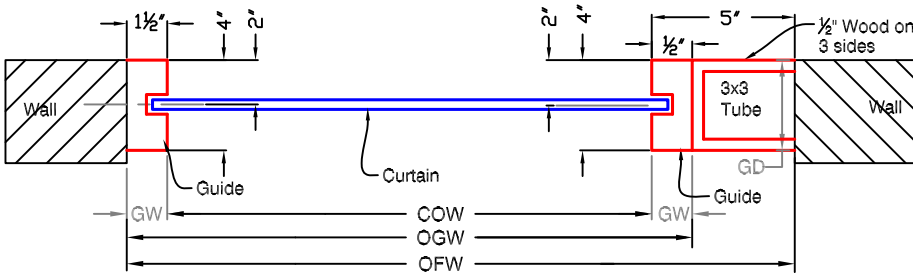
LG - Left Guide
 RG - Right Guide
 B - Bracket
 GW - Guide Width
 GD - Guide Depth

Door is shown right hand drive, left hand is opposite.

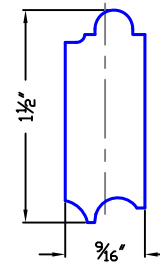


COIL SIDE ELEVATION

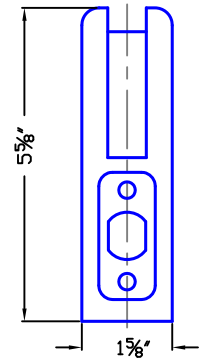
VERTICAL SECTION A - A



GUIDE SECTION



SLAT PROFILE



BBAR PROFILE

CURTAIN

BOTTOM BAR

Notes:

1. See page 2 for more options.
2. All metric conversions of dimensions are shown in brackets [].

SALES REP: _____
 CUSTOMER: _____
 JOB NAME: _____
 NUMBER: _____

Manufactured by:



8 HULSE ROAD EAST SETAUKET, N.Y. 11733
 TEL: (631)473-9300 FAX: (631)642-0800
 © COPYRIGHT MAY 2007

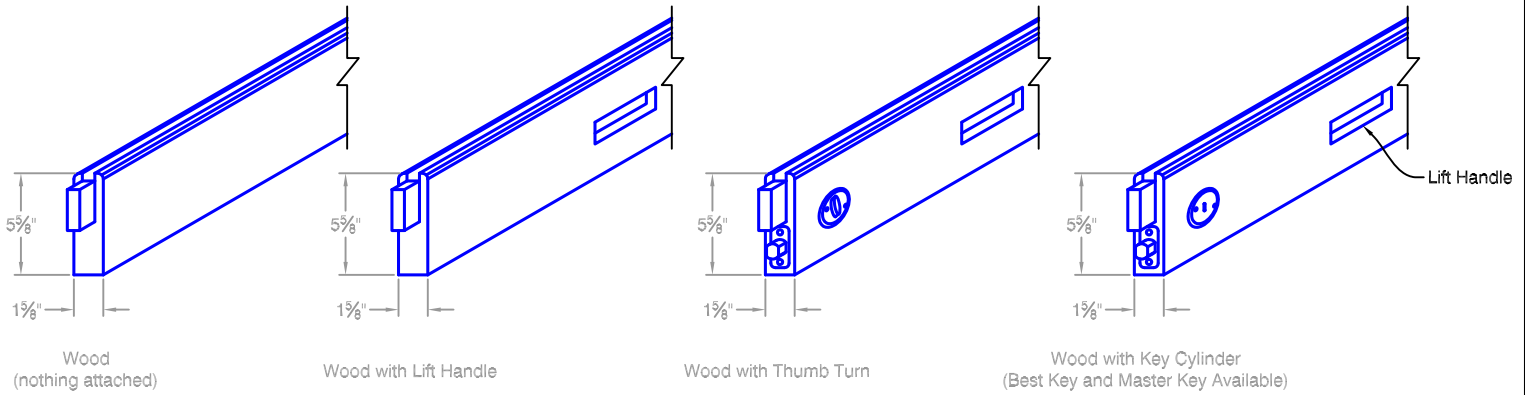
Wooden Counter-Shutter Door



Motor Operated
Between Jamb Mounted

Page#:

Page 2



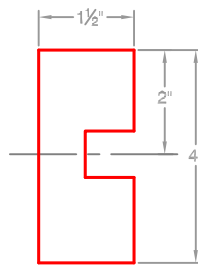
BOTTOM BAR OPTIONS AVAILABLE FOR THIS DOOR



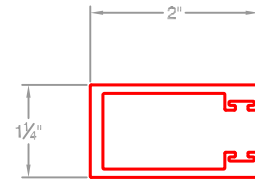
Neoprene Astragal

Electric Sensing Edge

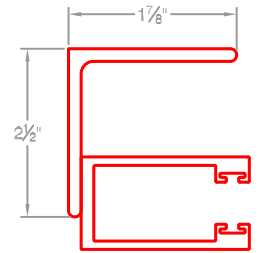
Pneumatic Sensing Edge



Standard Wood Guide



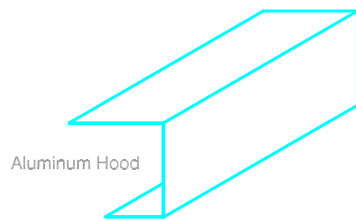
Aluminum Guide (between jambs)



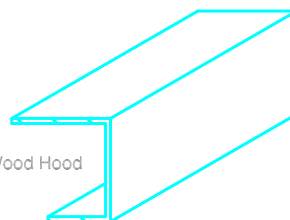
Aluminum Guide (face of wall)

OPTIONAL EDGES AVAILABLE

GUIDES AVAILABLE FOR THIS DOOR



Aluminum Hood



Wood Hood

HOOD SHAPES AVAILABLE FOR THIS DOOR

Distributed By:

Call your Alpine representative for additional options and safety products to help find the best Alpine door to suit your needs.

Manufactured by:



8 HULSE ROAD EAST SETAUKET, N.Y. 11733
TEL: (631)473-9300 FAX: (631)642-0800
© COPYRIGHT MAY 2007