



## WIND-TITE

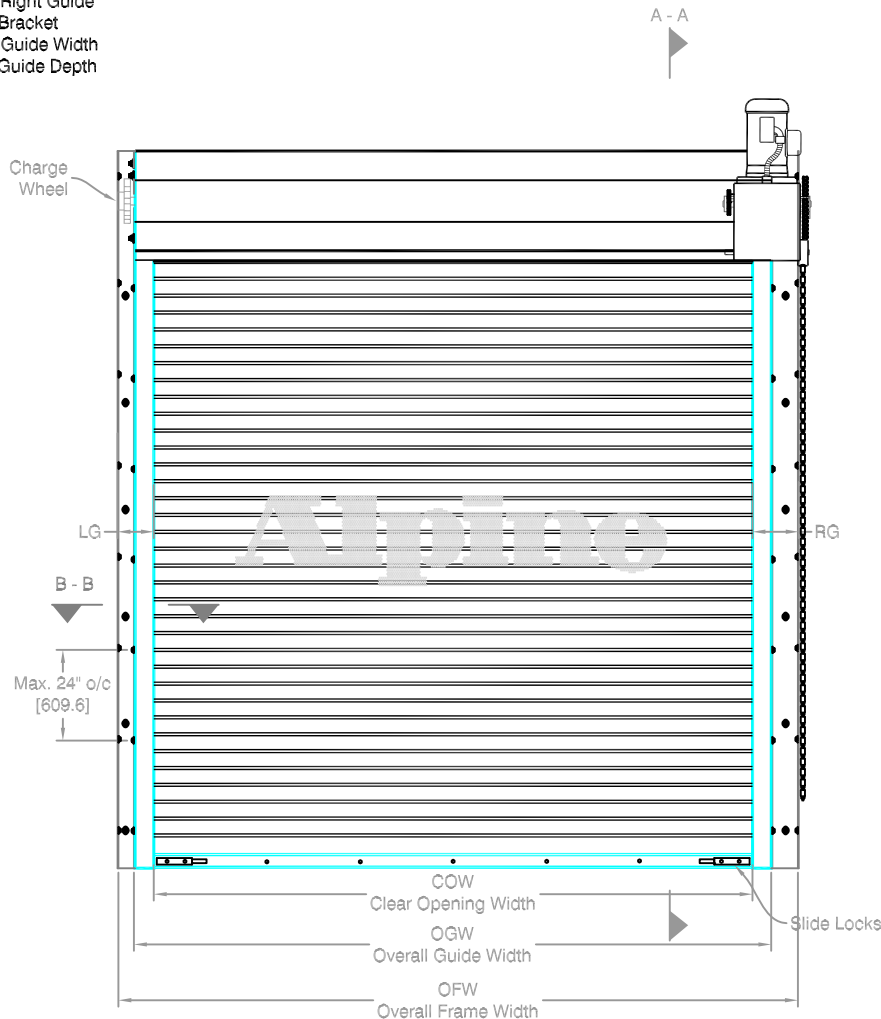
FULL WEATHER SEALED DOOR

Motor Operated  
Between Jamb Mounted

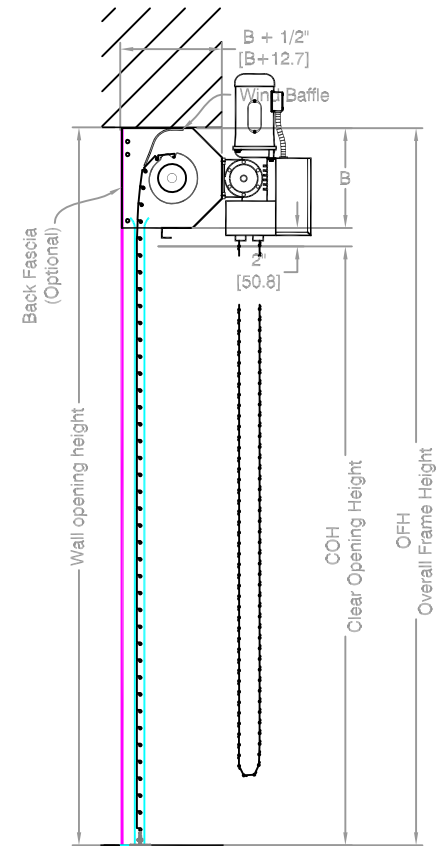
Page#:

Page 1

LG - Left Guide  
RG - Right Guide  
B - Bracket  
GW - Guide Width  
GD - Guide Depth

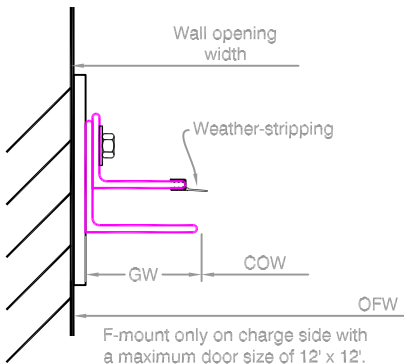


COIL SIDE ELEVATION

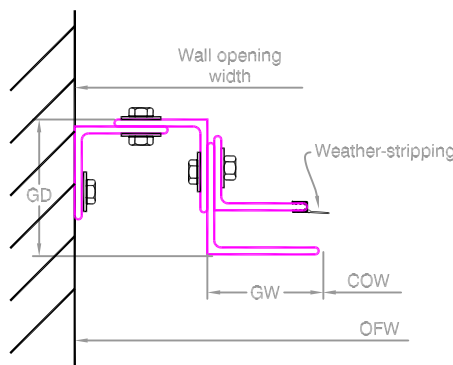


VERTICAL SECTION A - A

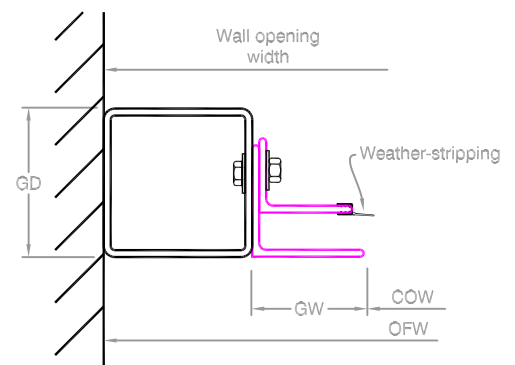
STEEL MOUNTED



PACKOUT MOUNTED



TUBE MOUNTED



GUIDE SECTION B - B

### Notes:

- See page 2 for more options.
- All metric conversions of dimensions are shown in brackets [ ].

SALES REP:

CUSTOMER:

JOB NAME:

NUMBER:

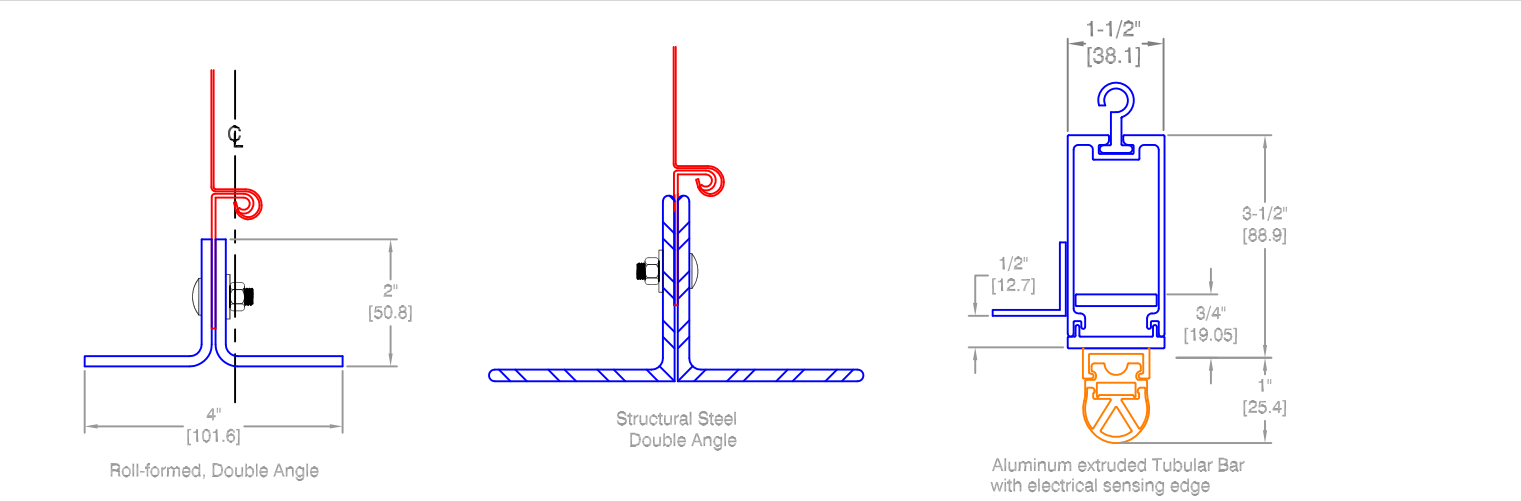
Manufactured by:

**Alpine**<sup>®</sup>  
OVERHEAD DOORS, INC.

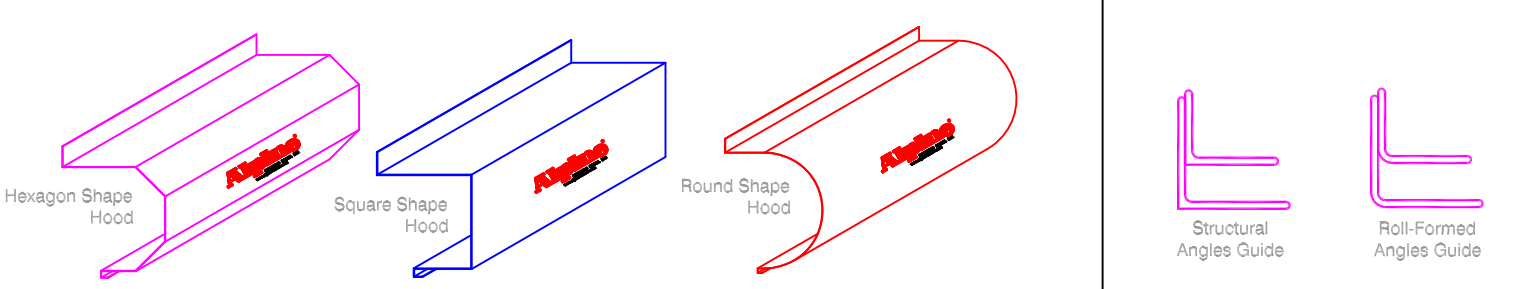
8 HULSE ROAD EAST SETAUKET, N.Y. 11733

TEL: (631)473-9300 FAX: (631)642-0800

© COPYRIGHT DEC 2009

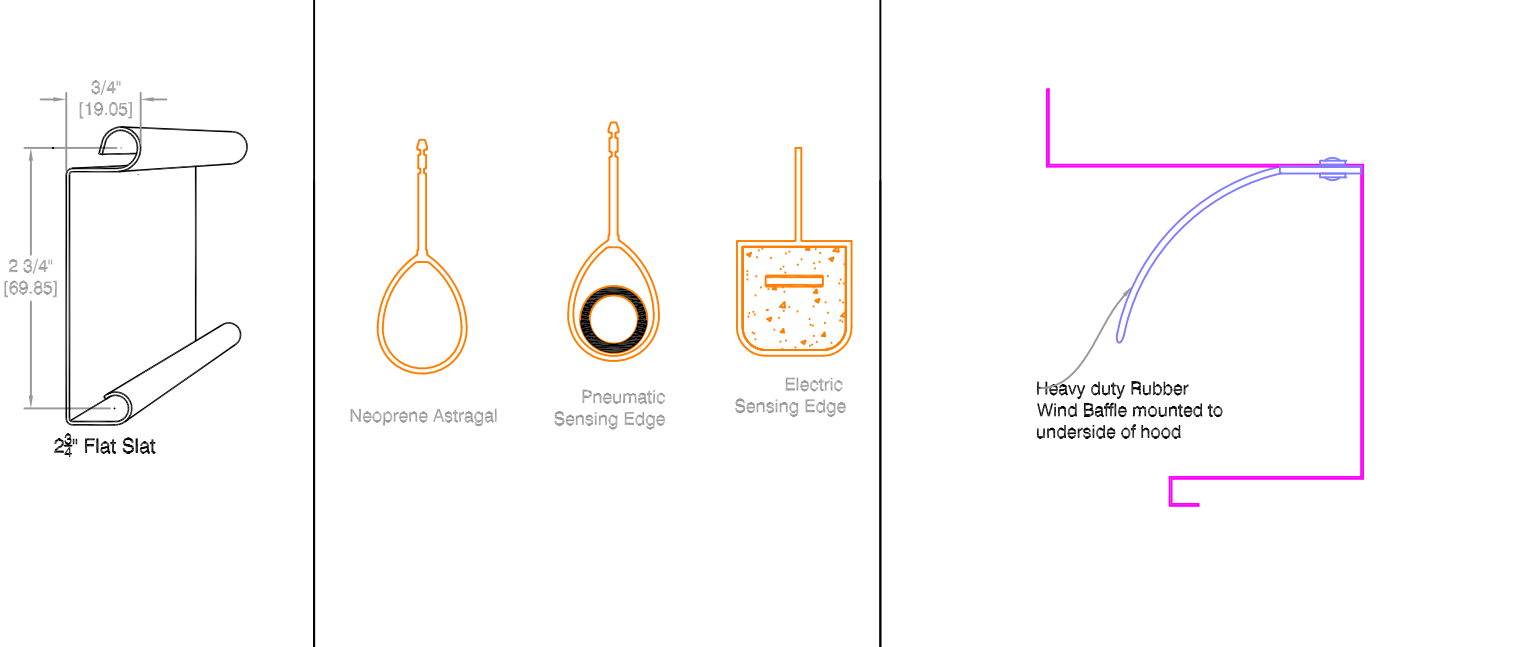


BOTTOM BAR DETAIL



HOOD SHAPES AVAILABLE FOR THIS DOOR

GUIDE OPTIONS



CURTAIN DETAIL

OBSTACLE EDGES AVAILABLE

WIND BAFFLE DETAIL

NOTE: MAXIMUM PIPE  
DEFLECTION ON ANY SIZE  
DOOR IS .034

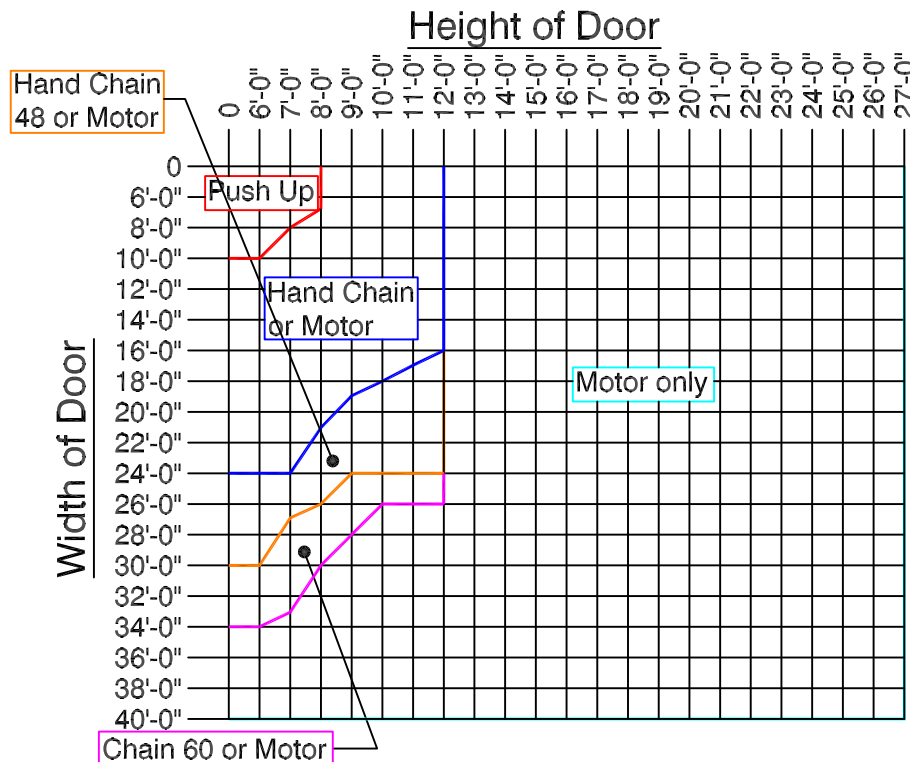
## WIND-TITE

FULL WEATHER SEALED DOOR

Page#:

Page 3

Finding the minimum required operation for the size door you need.



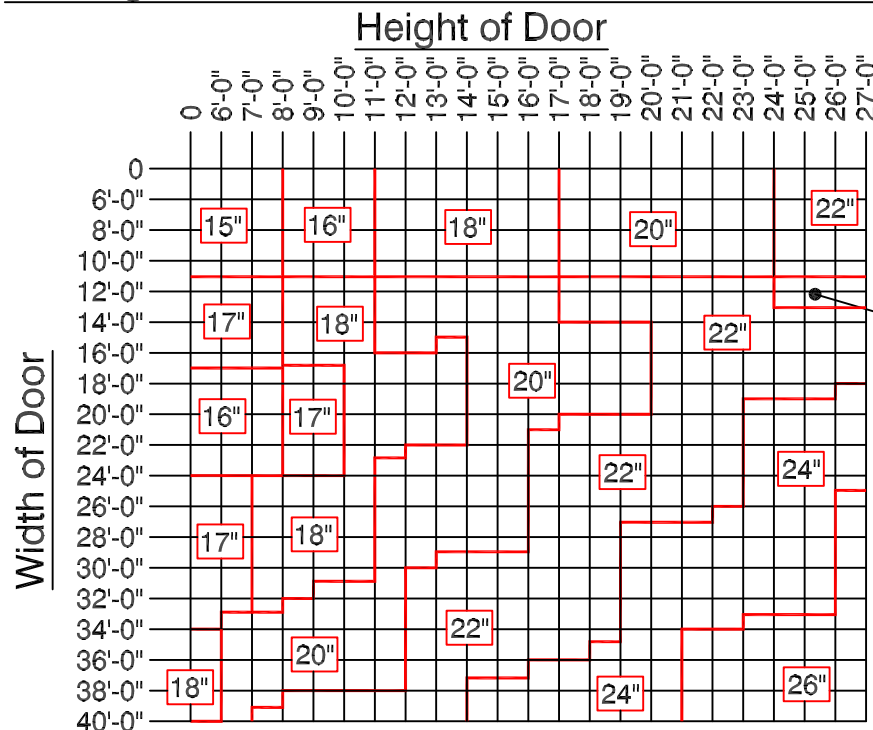
### Operator Legend

- Manual Push Up Operation
- Hand Chain Operation
- Hand Chain with Gear Reduced 48
- Hand Chain with Gear Reduced 60
- Motor Operation Only

To use Chart: Find where your door width and height meet to find the minimum operation that may be used for that door size.

For example: The blue line indicates a Hand Chain Operation. Any size door on that line or above that line may use a Hand Chain, including the door sizes that fall into the Manual push up door. But, The Manual push up door may not be used for any door size below the line representing Push up operation. For any door size larger than what is represented here please consult your Alpine Overhead Doors, Inc. Factory. This Graph is for reference only, subject to change without notice.

Finding the minimum "B" bracket size for the door you need.



NOTE: Bracket sizes (B) may vary based on gauge of curtain. Bracket size is directly related to the pipe low moment arm deflection (not more than .03 inches per foot).

To use Chart: Find where your door width and height meet to find the minimum bracket size for your door. For any door size larger than what is represented here please consult your Alpine Overhead Doors, Inc. Factory. This Graph is for reference only, subject to change without notice.

Distributed By:

Manufactured by:

## Alpine®

OVERHEAD DOORS, INC.

8 HULSE ROAD EAST SETAUKET, N.Y. 11733

TEL: (631)473-9300 FAX: (631)642-0800

© COPYRIGHT DEC 2009