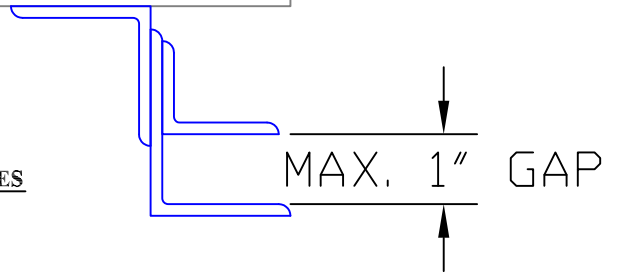


8 HULSE ROAD, EAST SETAUKET, NY 11733  
TEL (631) 473-9300 FAX (631) 642-0800

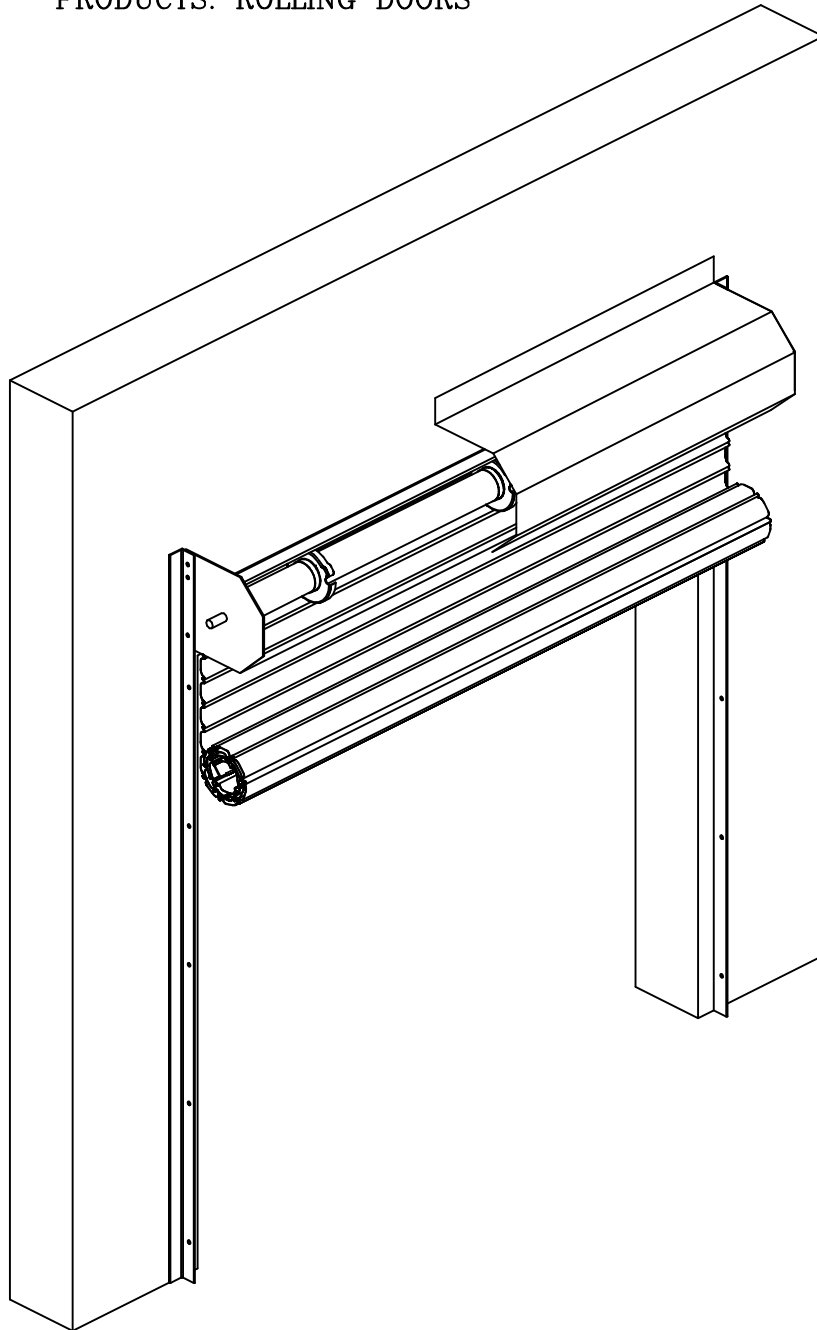
# DIMENSION SHEET

**IMPORTANT NOTE: IF THIS DOOR REQUIRES STRUCTURAL GUIDES  
THE MAXIMUM GAP IS 1". SEE DIAGRAM TO RIGHT.**

[illegible]



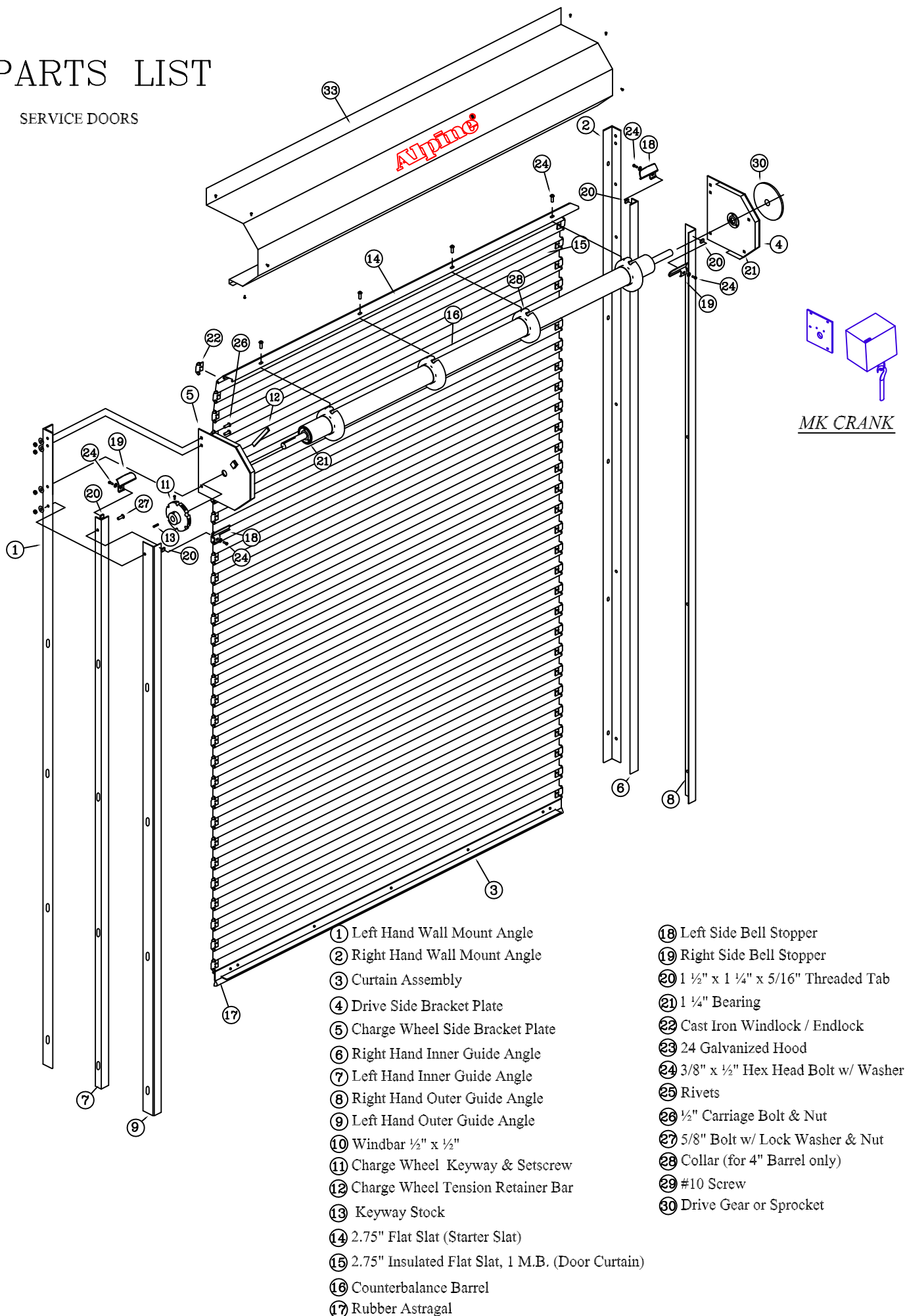
OPERATION & MAINTENANCE MANUAL  
PRODUCTS: ROLLING DOORS



8 HULSE ROAD, EAST SETAUKET, NY 11733  
TEL (631) 473-9300 FAX (631) 642-0800

# PARTS LIST

## SERVICE DOORS



# ROLLING STEEL DOORS

## INSTALLATION INSTRUCTIONS

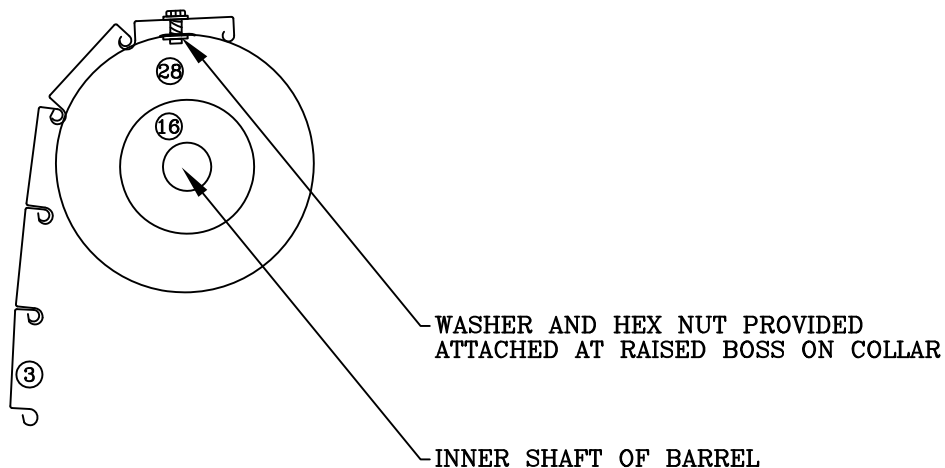
NOTE: Prior to installation, read all instructions. Open all crates to insure that all parts supplied are the parts listed for the type of door being installed.

- FIRST: Check opening width and height dimensions for agreement with those shown on the shop drawings. They should be the same. With guides on floor, run 5/16" diameter self-tapping screws into bellmouth mounting pads at top of guide assembly (four pieces.). This will aid in bellmouth installation later
- SECOND: Find the best level working line such as the lintel. Check the shop drawings for any set back of the guides from face of opening, then set in place the ①left hand wall mount angle. Set the ②right hand wall mount angle equal distances at the top and bottom and level with the left hand angle as shown on shop drawings. Mark all holes using the upper section of the slot hole (this will allow for any leveling adjustments if required). Center punch marks and drill and tap (if fastening to steel) or drill for expansion shields (if fastening to masonry).
- THIRD: Locate a good hoisting point above the center of the opening and set in place a chain block (if no other hoisting equipment is available). On larger doors it is advisable to use two chain blocks.
- FOURTH: Place the ⑬counterbalance barrel at the base of the guides. Check the markings on the shaft. The adjusting end will always be marked LH or RH Adjust. Left and right hand is always relative to the side of the opening on which you are installing the door. Place shaft according to these marks.
- FIFTH: Hoist shaft two or three feet from the floor. 4" barrels will use ⑳ collars. Larger diameter barrels will use direct curtain attachment only. Next, place the ⑤Charge wheel side bracket plate on the charge wheel end of the shaft. The ⑫ charge wheel tension retainer bar is packaged with the hardware. Install the ⑪ charge wheel on the inner shaft with tension retainer bar at this time.

NOTE: On smaller "between jamb" push up doors, the tension retainer bar will have a lug with a hole. The shaft will have an "inside" charge wheel already pinned into shaft.

### CURTAIN TO COLLAR INSTALLATION

Fasten ③curtain assembly to ring by positioning the fastening section over the raised boss on collar and line up holes. Insert screw with flat washer into tapped hole and tighten securely.





SIXTH: Assemble ④ drive side bracket plate on opposite end of shaft. Chain and crank operators are factory mounted on brackets. It will be necessary to place ③0 drive gear (or sprocket) on shaft as you are assembling the bracket and connect the roller chain drive.

SEVENTH: Hoist the shaft and brackets, then fasten the brackets to the inside of the wall angle at top with machine bolts (supplied). Larger doors use machine bolts at top and flat head bolts in the counter sunk holes at bottom. Tighten bolts and check for level of shaft. Adjustment can be made by loosening wall mount angle fastening bolts on wall and moving entire assembly. On chain or crank operated doors, make final location adjustment of drive gear and roller chain at this time.

NOTE: Extra care should be used in this step, especially with insulated curtains to protect the finish.

EIGHTH: Position the rolled up curtain, with wrapping on two pieces of 2x4 blocks at base of guides. Be sure the end of the roll is on top and the curtain is coiled in the proper direction. Cut banding from curtain without removing wrapping, just allow wrapping to flap back. Drill or punch hole in center of the fourth slat down, leaving the top three slats and fastening sections free. Insert a machine eye (unfinished) using flat washers on either side of slat. Eye should be large enough to accept hook of the chain block. On doors over 10 ft. wide use two eyes approximately 4 ft on centers to distribute the weight.

NOTE: The chain from above should be behind the shaft on the wall side. Couple hook to eye and raise curtain with chain hoist while keeping roll of curtain on cardboard wrapping as it unrolls.

NINTH: When the top four slats are near the shaft and equal distance from the brackets, attach fastening sections to collars with nuts and washers provided on either side of fastening section. (see notes provided for attaching the curtain to collar).

TENTH: Verify the number of turns to be applied to the shaft with the curtain in the fully closed position. This information is written on the charge wheel end of pipe. Begin applying torque to the barrel by inserting a proper bar (flat or round) approximately 2 feet long into the top most hole of the charge wheel. Pull bar down and away from the wall (rotate charge wheel in the curtain coiling direction) and insert the tension retainer bar through the bracket clip angle and into the top hole in the charge wheel to hold the tension applied to the barrel. Put bolt through hole in bracket clip to secure tension retainer bar.

NOTE: Be sure to wind the charge wheel in the correct direction. Apply torque in the same direction that the curtain coils. In order to apply the full amount of spring charge required, it may be necessary to alternately raise the curtain with the hand chain operator and apply turns with the charge wheel. After full spring charge has been applied, raise curtain carefully to the point where the bottom bar and curtain can be positioned in the guides. Lower the curtain (this time, inside the guides) several inches below the top of the guide.



CAUTION:

THE CURTAIN AT THIS POINT HAS THE ABILITY TO LIFT AND SPIN AROUND ON THE SHAFT, THUS LOSING THE TORQUE JUST APPLIED. THEREFORE, SOME PRECAUTION IN SECURING THE CURTAIN IN THE GUIDES SHOULD BE TAKEN BEFORE INSTALLING THE STOPPERS. INSTALL REMOVABLE BELLMOUTHS ON GUIDE ASSEMBLIES WITH SELF-TAPPING SCREWS SUPPLIED. RE-ALIGN DRIVE GEAR IF NECESSARY AND TIGHTEN SET SCREWS AT THIS TIME.

ELEVENTH: Check curtain for ease of operation. Spring tension adjustment if needed, should be added or released, as required, with the curtain fully raised.



CAUTION:

INSERT PROPER BAR (FLAT OR ROUND) INTO CHARGE WHEEL. RELIEVE TENSION ON TENSION RETAINER BAR AND REMOVE. TURN WHEEL ONE NOTCH AT A TIME REPLACING THE TENSION RETAINER BAR AT EACH INTERVAL. TO INCREASE TENSION ROTATE CHARGE WHEEL IN DIRECTION OF RAISING OF CURTAIN. TO DECREASE, ROTATE CHARGE WHEEL UNDER ITS OWN POWER IN DIRECTION OF LOWERING CURTAIN.

TWELFTH: Check curtain for ease of operation. Spring tension adjustment if needed, should be added or released, as required, with the curtain fully raised.



8 HULSE ROAD, EAST SETAUKET, NY 11733  
TEL (631) 473-9300 FAX (631) 642-0800

## ROLLING STEEL DOORS SERVICE AND WEATHERED

### MOTOR OPERATED DOORS ARE OPERATING CORRECTLY WHEN:

- Door runs to full open position and shuts off without slamming against upper guide stops.
- Door runs to full closed position and stops without buckling. Bottom bar should make adequate contact with the floor.
- Safety bottom edge stops or reverses door travel when tested as door is closing.
- Functions of all control stations work properly (open, close, and stop).
- Door does not drift more than 6 inches when stop button is depressed while door is closing and at middle of travel.
- Door operates full cycle without catching or binding.
- Door is level in open and closed position.
- Emergency hand chain on operator raises and lowers door adequately.
- Emergency disconnect on operators allows door to be manually raised or lowered.

### MANUAL DOORS ARE OPERATING CORRECTLY WHEN:

- Door stays open without drifting down.
- Door balances in closed position or has slight lift.
- Door operates without excessive force to lift (less than 25 pounds).
- Door operates full cycle without catching or binding.
- Door is level in fully opened and fully closed positions.
- No excessive component wear exists.

<u>COMPONENT:</u>	<u>SUGGESTED LUBRICANT:</u>
BEARINGS/GREASE FITTINGS	MULTI-PURPOSE GREASE
LOCK MECHANISMS AND SHAFTS	GENERAL PURPOSE SPRAY LUBRICANT
ROLLER CHAINS	ROLLER CHAIN LUBRICANT WITH PENETRATING AGENT. (ALSO IN SPRAY CANS)
SPUR GEARS	GEAR LUBE DESIGNED FOR SPUR GEARS WITH TACKY CONSISTENCY (ALSO IN SPRAY CANS)
WEAR POINTS ON BRACKETS, GUIDES AND ENDLOCKS	PARAFIN BASED LUBRICANT IN STICK FORM (ALSO IN SPRAY DRY GRAPHITE)

## DOOR MAINTENANCE:

Improper maintenance procedures can damage a good door and injure the technician doing the work. The following recommended procedures for keeping a door performing at it's maximum potential are:

- Inspect door for alignment, level, and proper working clearances.
- Check curtain for damage, loose or missing parts.
- Check guides for damage and secure attachment.
- Inspect upper guide stops for damage, proper alignment, and secure attachment.
- Inspect guide, head, and bottom bar weather-stripping for wear or damage.
- Examine curtain to shaft attachment.
- Inspect end brackets for secure attachment. Check inside of end brackets for curtain rubbing. If there are signs of this, adjust curtain and lubricate wear points on brackets.
- Test the operation of the door for proper spring balance (on motor operated doors use emergency hand chain operator to test balance). When the door has proper balance, the curtain should have lift at the stops in the open position and not drift down. At the floor, the curtain should be balanced or lift up slightly. The door should not be difficult to raise through the middle of travel. The door may run through the middle of travel.
- Lubricate roller bearings which have grease fittings. Bearings are located at the operator end bracket and at charge wheel end of barrel shaft.
- Operate the door while closely watching curtain movement, correct any deficiencies which may cause the door to catch or snag.
- Inspect, align and lubricate the chains, shafts and gears of manual chain hoists or crank operators. Tighten all set screws and check roller chain tension.
- Inspect hand operating chain, crank eye, and removable crank for damage or wear.
- Check spring adjusting wheel and keeper for damage and secure installation.
- Check hood for secure attachment.
- Check operation of locks or slide bolts. Tighten cylinder locking set screws and lubricate the locking mechanism.

FOR MOTOR OPERATED DOORS REFER TO THE MOTOR MAINTENANCE SECTION.