



**Manufacturers of Superior Quality  
Rolling Steel Doors Since 1972**

# **High Security Doors**

*Proven Protection Against Theft, Riots, Vandalism and Looting*



**We're Always Rolling™**

[www.AlpineDoors.com](http://www.AlpineDoors.com)

# Protecting Lives, Property and Inventory

**P**oorly manufactured rolling doors will typically fail when faced with extreme threats. Why? They are simply not engineered or built well enough to withstand unconventional abuse. Slats and bottom bars aren't very secure. Inferior materials are often used. The list goes on. While this may be acceptable under normal circumstances, sub-par or improperly specified rolling doors will not hold up against people intent on tearing them apart. They will gain entry - often with astonishing speed. Property will get destroyed or looted costing from several thousands and even into millions of dollars. These tragedies can be prevented and property defended with a properly engineered rolling door.

Alpine's security doors are specifically designed to handle extreme threats. The strength of these high performance doors comes primarily from several key features that standard doors lack including:

**End Locks** - added to slat ends to lock them in place and prevent them from sliding left to right.

**Riot-Lock™ System** - added security prevents the curtain from being torn away from the guides. Available in single and double configurations.

**Bottom Bar Protection Locks** - these secure the bottom bar in place making it difficult to pry the door open from the bottom.

**Strong Slats** - constructed from higher gauge metals, with insulation options for added protection. Our Riot-Tite™ doors feature interlocking double slats offering the maximum level of security and impact protection. Ballistic resistance is available.



## Why Standard Rolling Doors Fail



Weak bottom bar without locks

No end locks makes slats easier to slide out

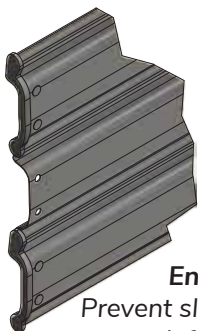


# Economy Security Doors

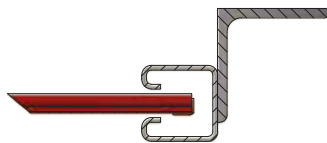
These cost effective security doors offer both strength and value. Don't let the name fool you. These doors offer standard features usually found only in competitors' mid and upper-range offerings.

## Features

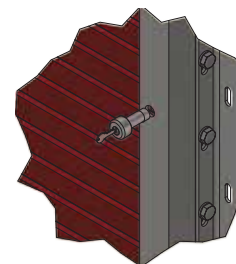
- 4.0" curved slats in 22ga galvanized steel
- Roll formed guides made from high strength steel making them difficult to open up or spread apart. Field welded at 18" intervals.
- Steel stamped end locks prevent lateral movement of slats
- Additional security options include slide locks, pin locks and guide locks
- Can be installed on the interior, exterior, face of wall or between jambs.
- Powder coating in any color with optional anti-graffiti properties



**End Locks**  
Prevent slats from sliding left to right



**Heavy Duty Roll Formed Guides**  
Made from high strength steel



**Pin Lock**  
Standard guide lock offers basic level of curtain security

**DAWN 4" DOOR™**  
ECONOMY BOX SPRING DOOR

### 4" Box Spring Door

- Manual push up with option for Redi-Central motor operator
- Optional motor operator is centrally located within the pipe, and covered by the hood
- Springbox counterbalance design utilizing blue tempered spring steel
- Hasp-pin type lock is standard. Optional slide locks available.
- Maximum size is 12' wide x 12' high

**E SERIES™**  
ROLLING SERVICE DOOR

### 4" Torsion Spring Door

- Manual push up, hand crank, hand chain or motor operated
- Optional guide mounted chain lock box
- Hasp-pin type lock is standard. Optional slide locks or Lock-Tite™ available for extra security.
- Optional structural heavy duty bottom bar upgrades

# Standard Security Doors

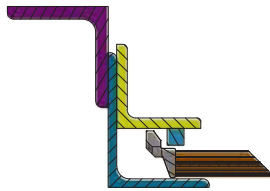
Our standard lineup offers enhanced protection over our economy doors. Curtains consist of either 2/3" flat or 3" curved slats. Several material thicknesses and optional security features are available.

## Features

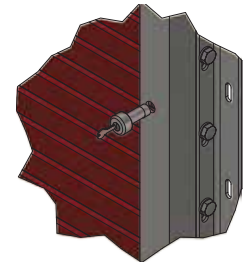
- 2-3/4" and 3" profiles in 22ga minimum with options for 20, 18, or 16. (14ga available for 3".)
- Galvanized Stainless Steel or Aluminum
- High strength structural steel guides
- Optional Riot-Lock™ advanced locking system provides security across the full height of the door, making it virtually impossible to remove curtain from guides
- Tamper-proof hardware available
- Installed on the interior, exterior, face of wall or between jambs
- Powder coating in any color with optional **anti-graffiti properties**



**Riot-Lock™**  
Provides security across the full height of the door



**Heavy Duty Structural Guides**  
Made from high strength steel  
Shown with Riot-Lock™



**Lock-Tite™ Guide Security**  
Secures curtain to guides, enhancing overall door security

**SERV-DAWN®**  
INDUSTRIAL SERVICE DOOR

**WIND-TITE®**  
FULL WEATHER SERVICE DOOR

### 3" Curved Slat Non-Weather-Stripped Door

- 3.0" curved slats in 22ga minimum with options for 20, 18, 16 or 14 ga.
- Strong and cost effective door
- Contoured slats offer enhanced strength compared to flat slats
- Heavy duty construction design
- Manual push up, hand crank, hand chain or motor operated
- Up to and exceeding 60'0" in width

### 2-3/4" Flat Slat Door Weather Stripped Door

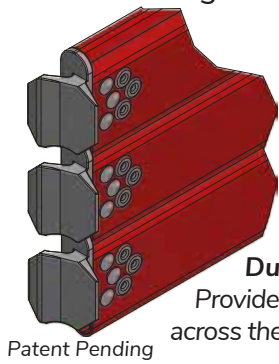
- 2.75" flat slats in 22 ga minimum, options for 20, 18 or 16 ga.
- Cleaner profile in the closed position
- Strong and effective protection against high wind, water penetration and other inclement weather
- Manual push up, hand crank, hand chain or motor operated
- Up to and exceeding 60'0" in width

# Maximum Security

Our maximum security doors boast the highest level of protection available, hands down. The impressive Riot-Tite™ model includes the Dual Riot-Lock™ system as standard, is impact resistant and has strong insulative properties. Ballistics resistance is available as well.

## Features

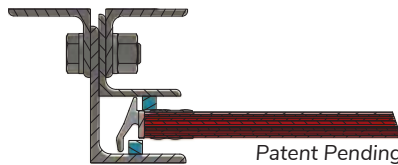
- 2-3/4" and 3" in 24ga - 16ga, (varies by model)
- Galvanized Stainless Steel or Aluminum
- Industry leading dual layer interlocking slat system
- Contains polystyrene insulation at a min 15/16" thick
- High strength structural steel guides
- Riot-Lock™ advanced locking system provides security across the full door height, making it almost impossible to remove curtain from guides
- Tamper-proof hardware available
- Optional Smart Security System will close multiple doors upon alarm
- Fail-safe options allow closure during power failure
- Ballistic resistant configurations available
- Installed on the interior, exterior, face of wall or between jambs
- Powder coating in any color with optional **anti-graffiti properties**



**Dual Riot-Lock™**

Provides maximum security across the full height of the door

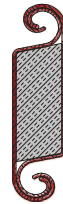
Patent Pending



**Heavy Duty Structural Guides**

Made from high strength steel  
Shown with Dual Riot-Lock™

Patent Pending



**Dual Layer Slats**

Interlocking design provides strong impact resistance

<p style="text-align: center;"><b>IMB-V7™</b> 13/16" THICK INSULATED SLAT DOOR</p>		<p style="text-align: center;"><b>RIOT-TITE™</b> MAXIMUM SECURITY DOORS</p>
<p style="text-align: center;"><b>7/8" Thick, 2-3/4" Slats</b></p> <ul style="list-style-type: none"> <li>• 3.0" curved slats in 24/24ga minimum, with options for 22, 20, 18 and 16</li> <li>• Strong and cost effective door with contoured slats</li> <li>• Heavy duty construction design</li> <li>• Manual push up, hand crank, hand chain or motor operated</li> <li>• Optional Riot-Lock™ system available</li> <li>• Installed on the interior, exterior, face of wall or between jambs</li> </ul>		<p style="text-align: center;"><b>15/16" Thick, 3" Slats</b></p> <ul style="list-style-type: none"> <li>• 20/20, 18/18, 16/16 gauges available</li> <li>• Slats available in galvanized steel &amp; stainless steel</li> <li>• Impact resistant</li> <li>• R-value of 9.00/U-Factor of 111 with a thermal break on each slat</li> <li>• Metal on metal layered slat with insulative properties available.</li> <li>• Perimeter weather seals available</li> <li>• Effective against wind loads of up to 250 PSF</li> <li>• Hand chain or motor operated</li> <li>• Dual Riot-Lock system standard</li> </ul>

# Quality, Safety and Security Since 1972

**A**lpine Overhead Doors, Inc. is an innovative US manufacturer of rolling doors. Since 1972, fueled by a passion for designing doors that are built to perform and last, Alpine has been focused exclusively on the rolling door market. Our products can be found across the United States and around the world, serving a wide variety of applications and environmental challenges. Our production facility currently manufactures over 60 different models and the product line is growing. Alpine is a privately held, family-owned company based in New York.



Visit Us Online at [www.AlpineDoors.com](http://www.AlpineDoors.com)

- Online dealer portal with pricing
- Cut sheets and 3-part specifications for all standard products
- Standard drawings
- Online CAD drawing generator
- Product catalog



FEMA

**Alpine**<sup>®</sup>  
OVERHEAD DOORS, INC.

**Alpine Overhead Doors, Inc.**  
8 Hulse Road • East Setauket, NY 11733  
[www.AlpineDoors.com](http://www.AlpineDoors.com)  
Phone: 1-631-473-9300 • Fax: 1-631-642-0800

**"We're Always Rolling"™**