



**Manufacturers of Superior Quality
Rolling Steel Doors Since 1972**

Security Grilles

Providing Superior Protection, Visibility and Airflow



We're Always Rolling™

www.AlpineDoors.com



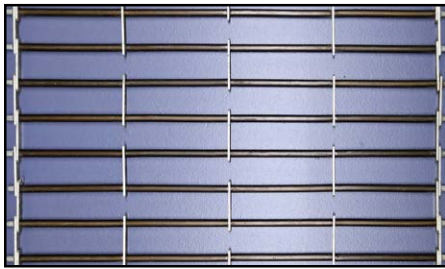
High Quality Grilles for Every Application

- Attractive and versatile
- Ideal for interior or exterior uses where visibility, security, and airflow are required
- Available in multiple configurations with many operation choices and safety features

Light Duty	Standard Usage	Maximum Performance
<ul style="list-style-type: none"> • Ideal for low cycle use such as exterior storefronts • PVC tube spacers or continuous link • Torsion or band springs • Most economical 	<ul style="list-style-type: none"> • Perfect for malls, kiosks and service windows, etc. • Longer life cycles • Aluminum guides and bottom bars • Tube spacers or continuous link • Torsion springs 	<ul style="list-style-type: none"> • For demanding, high-traffic uses such as parking garages and municipal buildings • Heavy duty, high speed, and high cycles • Structural steel guides and reinforced bottom bars



Grille Patterns



Brick w/ 2" Vertical Links
(Shown with PVC Sleeves)

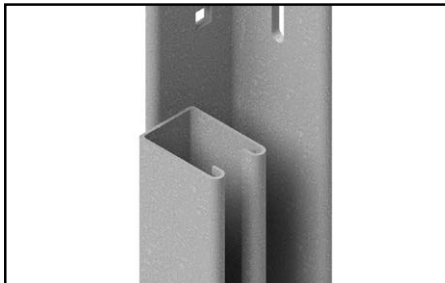


Straight w/ 2" Vertical Links
(Shown with PVC Sleeves)



Continuous Grommeted Links
(4" Links, 2" Vertical Wire Spacing)

Guides



Roll Formed Steel



Extruded Aluminum (F)
(Shown without Bellmouths)

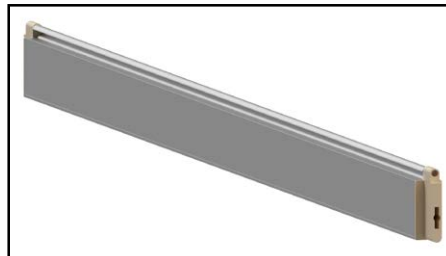


Structure Steel (E)
(Shown without Bellmouths)

Bottom Bars



Extruded Aluminum T



Tubular

Optional bottom bar astragal available



Double Angle

Options & Accessories

Locks

- Slide locks
- Hasp Pin
- Cylinder/slide lock combo
- Cylinder (key or thumb turn)
- on tubular bottom bar only

Standard Finish Coat Colors



Alpine Grey



Alpine Tan



Alpine White

Available on guides, bottom bars, and hoods only.

NOTE: All colors shown are approximate.

Exo-Shield™ Powder Coating



Standard & custom RAL colors. Samples upon request. View custom colors at alpinedoors.com/standard-color-selection/

Tube Spacer Options



PVC - Grey

PVC - Bronze

PVC - Black

Clear Anodized Aluminum

Stainless Steel

Alpine's Standard Rolling Grille Models

Light Duty

Dawn-Grille™

E-Series Grille™ X

E-Series Grille™

Counter-Grille™



Guide Type	Roll Formed Steel	Roll Formed Steel	Roll Formed Steel	Extruded Aluminum w/ Wool Pile Runner
Pipe	Band Spring	Torsion Spring	Torsion Spring	Torsion Spring
Grille Patterns	6" Brick 6" or 9" Straight Vertical Links	3", 6" or 9" Straight Continuous Grommated Links	3', 6" or 9" Straight Vertical Links	6" Brick 6" or 9" Straight Vertical Links
Max Dimensions	14'6"x12'	40'6"x27'6"	40'6"x27'6"	17'x8'
Rod Material	Galvanized	Galvanized	Galvanized	Galvanized
Tube Spacer Material	PVC (Bronze, Black, Silver or Gold)	Sleeveless	PVC (Bronze, Black, Silver or Gold)	Aluminum, Stainless Steel
Link Material	Aluminum	Aluminum	Aluminum	Aluminum
Bottom Bar	Extruded Aluminum T	Extruded Aluminum T	Extruded Aluminum T	Double Angle or Tubular
Guide Finish	Exo-Shield	Exo-Shield	Exo-Shield	Anodized Aluminum, Exo-Shield, or Stainless
Hood Finish	Galvanized or Optional Exo-Shield	Galvanized or Optional Exo-Shield	Galvanized or Optional Exo-Shield	Galvanized or Optional Exo-Shield, Stainless, or Aluminum
Life Cycle	7,500 Standard Optional Higher Cycle Rating	20,000 Standard Optional Higher Cycle Rating	20,000 Standard Optional Higher Cycle Rating	20,000 Standard Optional Higher Cycle Rating
Operation	Push Up, Electric Operator	Push Up, Hand Chain, or Electric Operator	Push Up, Hand Chain, or Electric Operator	Push Up, Hand Chain, Hand Crank, or Electric Operator
Safety Accessories	Electric Sensing Edge	Photo Safety Sensors, Electric Sensing Edge	Photo Safety Sensors, Electric Sensing Edge	Photo Safety Sensors, Electric Sensing Edge
Warranty	1 Year Limited	1 Year Limited	1 Year Limited	2 Year Limited
Egress	N/A	Manual	Manual	N/A
Common Applications	Schools, Public Buildings, Store Fronts	Store Fronts, Malls, Shopping Centers	Store Fronts, Malls, Shopping Centers	Security Windows, Pharmacies, Concessions

Standard Usage

Maximum Performance

Mall-Dawn® X	Mall-Dawn®	Auto-Egress™	Industrial-Grille™	Speed-Grille™
				
Extruded Aluminum w/ Wool Pile Runner	Extruded Aluminum w/ Wool Pile Runner	Extruded Aluminum w/ Wool Pile Runner	Structural Steel	Structural Steel
Torsion Spring	Torsion Spring	Torsion Spring	Torsion Spring	Springless
3", 6" or 9" Straight Continuous Grommited Links	6" Brick 3", 6" or 9" Straight Vertical Links	6" Brick 3", 6" or 9" Straight Vertical Links	6" Brick 3", 6" or 9" Straight Vertical Links	or 6" Brick 3", 6" or 9" Straight Vertical Links
40'x27'	40'x27'	40'x27'	40'6"x27'6"	40'6"x27'6"
Galvanized or Optional Aluminum or Stainless	Galvanized or Optional Aluminum or Stainless	Galvanized or Optional Aluminum or Stainless	Galvanized or Optional Stainless	Galvanized or Optional Stainless
Sleeveless	Aluminum, Stainless Steel	Aluminum, Stainless Steel	Aluminum, Stainless Steel	Aluminum, Stainless Steel
Aluminum	Aluminum, Stainless Steel	Aluminum, Stainless Steel	Aluminum, Stainless Steel	Aluminum, Stainless Steel
Tubular Aluminum or Stainless	Tubular Aluminum or Stainless	Tubular Aluminum or Stainless	Double Angle Galvanized or Stainless	Double Angle Galvanized or Stainless
Anodized Aluminum, Exo-Shield	Anodized Aluminum, Exo-Shield	Anodized Aluminum, Exo-Shield	Exo-Shield, Stainless Steel	Exo-Shield, Stainless Steel
Galvanized or Optional Exo-Shield, Stainless, or Aluminum	Galvanized or Optional Exo-Shield, Stainless, or Aluminum	Galvanized or Optional Exo-Shield, Stainless, or Aluminum	Galvanized or Optional Exo-Shield or Stainless	Galvanized or Optional Exo-Shield or Stainless
20,000 Standard Optional Higher Cycle Rating	20,000 Standard Optional Higher Cycle Rating	20,000 Standard Optional Higher Cycle Rating	20,000 Standard Optional Higher Cycle Rating	Available up to 300,000
Push Up, Hand Chain, Hand Crank, or Electric Operator	Push Up, Hand Chain, Hand Crank, or Electric Operator	Electric Operator	Push Up, Hand Chain, Hand Crank, or Electric Operator	Direct Drive High-Speed Electric Operator
Photo Safety Sensors, Electric Sensing Edge	Photo Safety Sensors, Electric Sensing Edge	Photo Safety Sensors, Electric Sensing Edge	Photo Safety Sensors, Electric Sensing Edge	Photo Safety Sensors, Electric Sensing Edge, Light Curtain Sensor
2 Year Limited	2 Year Limited	2 Year Limited	2 Year Limited	2 Year Limited
Manual	Manual	Automatic w/ Fail Secure Option	Manual	N/A
Malls, Store Fronts, Schools, Parking Garages, Manufacturing Facilities	Malls, Store Fronts, Schools, Parking Garages, Manufacturing Facilities	Schools, Hospitals, Public Buildings	Parking Garages, Municipal Facilities, Store Front Security	Parking Garages, Municipal Facilities, Store Front Security

Operators



Redi-Master® DC

- Heavy industrial-duty, gear reduced DC operator with aux hand chain
- 8-9" per second average speed with soft start/stop
- Floor level wall controller with LCD display
- myQ® remote monitoring/control



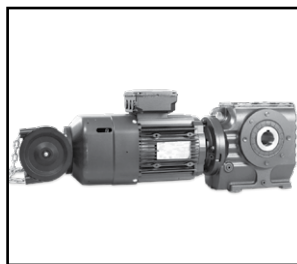
Redi-Master® (GH)

- Heavy industrial-duty, gear reduced operator with aux hand chain
- 8" per second average speed
- Three button open-close-stop control station NEMA-1



Redi-Lift® (H)

- Industrial-duty, V-belt hoist operator with aux hand chain
- 8" per second average speed
- Three button open-close-stop control station NEMA-1



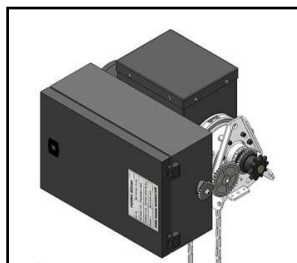
Redi-Fast®

- High speed, continuous duty cycle direct drive motor system
- Electronic dynamic braking
- No need for sprockets/roller chains
- Soft start/stop



Redi-Shut®

- Gear reduced jackshaft operator with a high starting torque
- Full overload protection
- Aux manual push-up
- Three button open-close-stop control station NEMA-1



Redi-Egress™

- Fail-safe for automatic open after power loss/alarm activation, optional fail-secure function allows grille to remain closed upon loss of power
- Auxiliary chain hoist operation
- Available for Auto-Egress™ only



Redi-Tube®

- Tubular metal door motor with a built-in hand crank overdrive

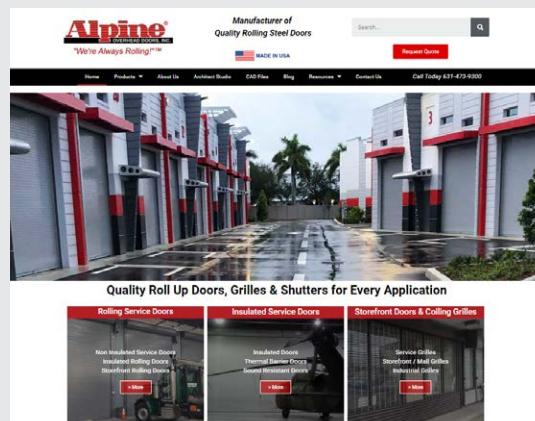


Redi-Central®

- Light duty box spring door operator
- Available on Dawn-Grille™ only

Visit Us Online at
www.AlpineDoors.com

- Online dealer portal with pricing
- Cut sheets and 3-part specifications for all standard products
- Standard drawings
- Online CAD drawing generator
- Product catalog



Alpine Overhead Doors, Inc.

8 Hulse Road • East Setauket, NY 11733

www.AlpineDoors.com • sales@alpinedoors.com

Phone: 1-631-473-9300 • Fax: 1-631-642-0800