



**Manufacturer of Superior Quality  
Rolling Steel Doors Since 1972**

# **Service Doors**

**Strong · Secure · Durable · Versatile**



**We're Always Rolling™**

[www.AlpineDoors.com](http://www.AlpineDoors.com)



## High Quality Service Doors for Every Application

- Available with flat or curved slats in various material gauges, finishes, and mounting configurations. Insulated, perforated, and fenestrated configurations available.
- Wide range of operation choices, safety features, locking mechanisms, access controls, and other customization options.

Light Duty	Standard Usage	Maximum Performance
<ul style="list-style-type: none"> <li>• Ideal for low cycle use such as exterior storefronts</li> <li>• Torsion springs</li> <li>• Most economical</li> </ul>	<ul style="list-style-type: none"> <li>• Longer life cycles</li> <li>• Structural steel guides</li> <li>• Structural steel or double angle bottom bars</li> </ul>	<ul style="list-style-type: none"> <li>• Thermally insulated to better protect against the elements and reduce energy costs</li> <li>• Sound dampening models for noise reduction</li> <li>• Heavy duty, high speed, and high cycle models available</li> </ul>



## Slats



3" Curved



4" Curved



Flat



IMB-V7 (Insulated)



IMB-V9 (Insulated)



Perforated

Slats shown for profile reference only. For material and finish options, please see specification table.

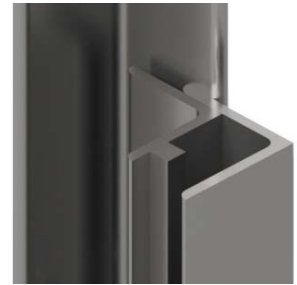
## Guides



Roll Formed Steel



Structural Steel (E)  
(Shown without Bellmouths)



Structural Steel (E) w/ Windbar  
(Shown without Bellmouths)

## Bottom Bars



Extruded Aluminum T



Double Angle



Insulated Double Angle w/ Seal

## Options & Accessories

### Locks

- Slide locks
- Hasp pin
- Cylinder/slide lock combo

### Standard Finish Coat Colors



Alpine Grey   Alpine Tan   Alpine White   Galvanized

Available on curtains (certain models), guides, bottom bars, and hoods.

NOTE: All colors shown are approximate.

### Exo-Shield™ Powder Coating



Standard & custom RAL colors. Samples upon request. View custom colors at [alpinedoors.com/standard-color-selection/](http://alpinedoors.com/standard-color-selection/)

### Vision Lites



Provide visibility & light. Available only on certain models.

### Fenestrated Slats



Provide ventilation, visibility, and light. Available only on certain models.



# Alpine's Service

— Light Duty —

— Standard Usage —

**E-Series™**

**Serv-Dawn®**

**Wind-Tite®**

**Steel-Vision®**



	E-Series™	Serv-Dawn®	Wind-Tite®	Steel-Vision®
<b>Guide Type</b>	Roll Formed Steel	Structural Steel	Structural Steel	Structural Steel
<b>Pipe</b>	Torsion Spring	Torsion Spring	Torsion Spring	Torsion Spring
<b>Max Dimensions</b>	20'x16'	50'x40'***	50'x40'***	30'x20'
<b>Slat Material</b>	Galvanized	Galvanized	Galvanized, Stainless or Aluminum	Galvanized or Stainless
<b>Slat Dimensions</b>	4" Curved	3" Curved	2.75" Flat	2.75" Perforated Flat
<b>Curtain Finish</b>	Galvanized or Exo-Shield Powder Coat	Galvanized, Exo-Shield Powder Coat, Alpine Grey, White or Tan	Galvanized, Exo-Shield Powder Coat, Alpine Grey, White or Tan, Anodized Aluminum, Stainless Steel	Galvanized, Exo-Shield Powder Coat, Alpine Grey, White or Tan, Stainless Steel
<b>Slat Gauge</b>	22, 24	14*, 16, 18, 20, 22, 24	16, 18, 20, 22, 24	18*, 20
<b>Insulation Material</b>	N/A	N/A	N/A	N/A
<b>Bottom Bar</b>	Extruded Aluminum T	Structural Steel Double Angle	Structural Steel Double Angle	Structural Steel Double Angle
<b>Guide Finish</b>	Exo-Shield Powder Coat	Exo-Shield Powder Coat, Hot-Dipped Galvanized, Stainless Steel	Exo-Shield Powder Coat, Hot-Dipped Galvanized, Stainless Steel	Exo-Shield Powder Coat, Hot-Dipped Galvanized, Stainless Steel
<b>Hood Finish</b>	Galvanized, Exo-Shield Powder Coat	Galvanized, Exo-Shield Powder Coat	Galvanized, Exo-Shield Powder Coat, Aluminum, or Stainless Steel	Galvanized, Exo-Shield Powder Coat, Aluminum, or Stainless Steel
<b>Life Cycle</b>	10,000 Standard Optional Higher Cycle Rating	20,000 Standard Optional Higher Cycle Rating	20,000 Standard Optional Higher Cycle Rating	20,000 Standard Optional Higher Cycle Rating
<b>Operation</b>	Push Up, Hand Chain, or Electric Operator	Push Up, Hand Chain, Hand Crank, or Electric Operator	Push Up, Hand Chain, Hand Crank, or Electric Operator	Push Up, Hand Chain, Hand Crank, or Electric Operator
<b>Safety Accessories</b> <i>For Motor Operated Doors Only</i>	Photo Safety Sensors, Electric Sensing Edge	Photo Safety Sensors, Electric Sensing Edge, Light Curtain Sensor	Photo Safety Sensors, Electric Sensing Edge, Light Curtain Sensor	Photo Safety Sensors, Electric Sensing Edge, Light Curtain Sensor
<b>Warranty</b>	1 Year Limited	2 Year Limited	2 Year Limited	2 Year Limited
<b>Common Applications</b>	Storefronts, Warehouses, Loading Docks, Car Wash Facilities, Aircraft Hangars, Public Facilities and more	Storefronts, Warehouses, Loading Docks, Car Wash Facilities, Public Facilities and more	Storefronts, Loading Docks, Warehouses, Shipping/Receiving Platforms, Aircraft Hangars, Military Platforms, Specialty Applications	Storefronts, Office/Retail Windows, Display Cases, Pass Through windows, Ventilated Areas

# Door Models

## High Performance

Speed-Tite™	IMB V7™	IMB-V9™	Insul-Sound®	Speed-Tite™ IMB
				
Structural Steel	Structural Steel	Structural Steel	Structural Steel	Structural Steel
Springless Barrel	Torsion Spring	Torsion Spring	Torsion Spring	Springless Barrel
40'x20'	50'x40'**	40'x20'**	40'x30'	40'x20'
Galvanized or Stainless	Galvanized, Stainless or Aluminum	Galvanized, Stainless or Aluminum	Galvanized, Stainless or Aluminum (PVC Backing)	Galvanized or Stainless
2.75" Flat	2.75"x7/8" Insulated Flat	3"x1" Insulated Flat	2.75"x7/8" Insulated Flat	2.75"x7/8" Insulated Flat
Galvanized, Exo-Shield Powder Coat, Alpine Grey, White or Tan, Anodized Aluminum, Stainless Steel	Galvanized, Exo-Shield Powder Coat, Alpine Grey, White or Tan, Anodized Aluminum, Stainless Steel	Galvanized, Exo-Shield Powder Coat, Alpine Grey, White or Tan, Anodized Aluminum, Stainless Steel	Galvanized, Exo-Shield Powder Coat, Alpine Grey, White or Tan, Anodized Aluminum, Stainless Steel	Galvanized, Exo-Shield Powder Coat, Alpine Grey, White or Tan, Stainless Steel
16*, 18, 20, 22, 24	16, 18, 20, 22, 24†	16, 18, 20†	16*, 18, 20, 22, 24†	16*, 18, 20, 22, 24†
N/A	Polystyrene or Polyurethane	Polystyrene or Polyurethane	Polystyrene or Polyurethane	Polystyrene or Polyurethane
Structural Steel Double Angle	Structural Steel Double Angle	Structural Steel Double Angle	Structural Steel Double Angle	Structural Steel Double Angle
Exo-Shield Powder Coat, Hot-Dipped Galvanized, Stainless Steel	Exo-Shield Powder Coat, Hot-Dipped Galvanized, Stainless Steel	Exo-Shield Powder Coat, Hot-Dipped Galvanized, Stainless Steel	Exo-Shield Powder Coat, Hot-Dipped Galvanized, Stainless Steel	Exo-Shield Powder Coat, Hot-Dipped Galvanized, Stainless Steel
Galvanized, Exo-Shield Powder Coat, or Stainless Steel	Galvanized, Exo-Shield Powder Coat, Aluminum, or Stainless Steel	Galvanized, Exo-Shield Powder Coat, Aluminum, or Stainless Steel	Galvanized, Exo-Shield Powder Coat, Aluminum, or Stainless Steel	Galvanized, Exo-Shield Powder Coat, or Stainless Steel
Available up to 300,000	20,000 Standard Optional Higher Cycle Rating	20,000 Standard Optional Higher Cycle Rating	20,000 Standard Optional Higher Cycle Rating	Available up to 300,000
Direct Drive High Speed Operator	Hand Chain, Hand Crank, or Electric Operator	Hand Chain, Hand Crank, or Electric Operator	Hand Chain, Hand Crank, or Electric Operator	Direct Drive High Speed Operator
Photo Safety Sensors, Electric Sensing Edge, Light Curtain Sensor	Photo Safety Sensors, Electric Sensing Edge, Light Curtain Sensor	Photo Safety Sensors, Electric Sensing Edge, Light Curtain Sensor	Photo Safety Sensors, Electric Sensing Edge, Light Curtain Sensor	Photo Safety Sensors, Electric Sensing Edge, Light Curtain Sensor
2 Year Limited	2 Year Limited	2 Year Limited	2 Year Limited	2 Year Limited
Loading Docks, Warehouses, Shipping/Receiving Platforms, Car Dealerships, Parking Garages, Fire Houses	Warehouses, Loading Docks, Parking Garages, Aircraft Hangars, Firehouses, Truck Terminals, Police Stations, Correctional Facilities, Manufacturing/Retail	Warehouses, Loading Docks, Parking Garages, Aircraft Hangars, Firehouses, Truck Terminals, Police Stations, Correctional Facilities, Manufacturing/Retail	Warehouse Facilities, Storage Buildings, Music Recording Studios, Television Studios, and Theaters	Loading Docks, Warehouses, Shipping/Receiving Platforms, Car Dealerships, Parking Garages, Firehouses

\*Consult factory for availability. | \*\* Large sizes available, consult sizes.

†Available in various front/back gauge combinations. Consult factory for details.

# Operators



## Redi-Master® DC

- Heavy industrial-duty, gear-reduced DC operator with aux hand chain
- 8"-9" per second average speed with soft start/stop
- Floor level wall controller with LCD display
- myQ® remote monitoring/control



## Redi-Master® (GH)

- Heavy industrial-duty, gear-reduced operator with aux hand chain
- 8"-9" per second average speed
- Three button open-close-stop control station NEMA-1



## Redi-Lift® (H)

- Industrial-duty, V-belt hoist operator with aux hand chain
- 8"-9" per second average speed
- Three button open-close-stop control station NEMA-1



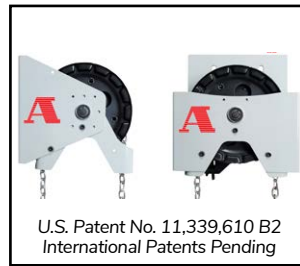
## Redi-Fast®

- High speed, continuous duty cycle direct drive motor with soft start/stop and aux hand chain
- Electronic dynamic braking
- No need for sprockets/roller chains



## Redi-Shut®

- Gear-reduced jackshaft operator with a high starting torque
- Full overload protection
- Aux manual push-up
- Three button open-close-stop control station NEMA-1

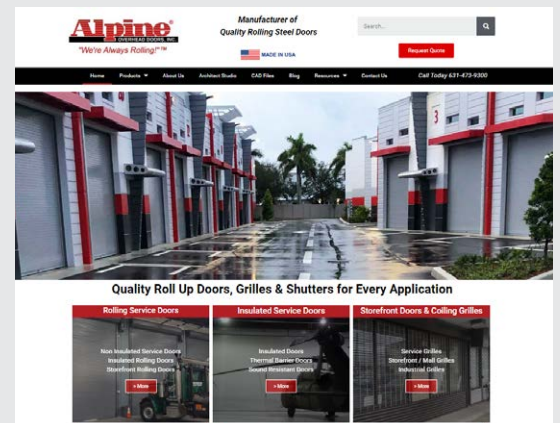


## Redi-Assist™/Redi-Assist HD

- Manual chain hoist features adjustable braking mechanism for controlled descent
- Failsafe override stops the door should the braking mechanism fail
- New or retrofit

Visit Us Online at  
[www.AlpineDoors.com](http://www.AlpineDoors.com)

- Online dealer portal with pricing
- Cut sheets and 3-part specifications for all standard products
- Standard drawings
- Online CAD drawing generator
- Product catalog



**Alpine Overhead Doors, Inc.**

8 Hulse Road • East Setauket, NY 11733

[www.AlpineDoors.com](http://www.AlpineDoors.com) • [sales@alpinedoors.com](mailto:sales@alpinedoors.com)

Phone: 1-631-473-9300 • Fax: 1-631-642-0800