

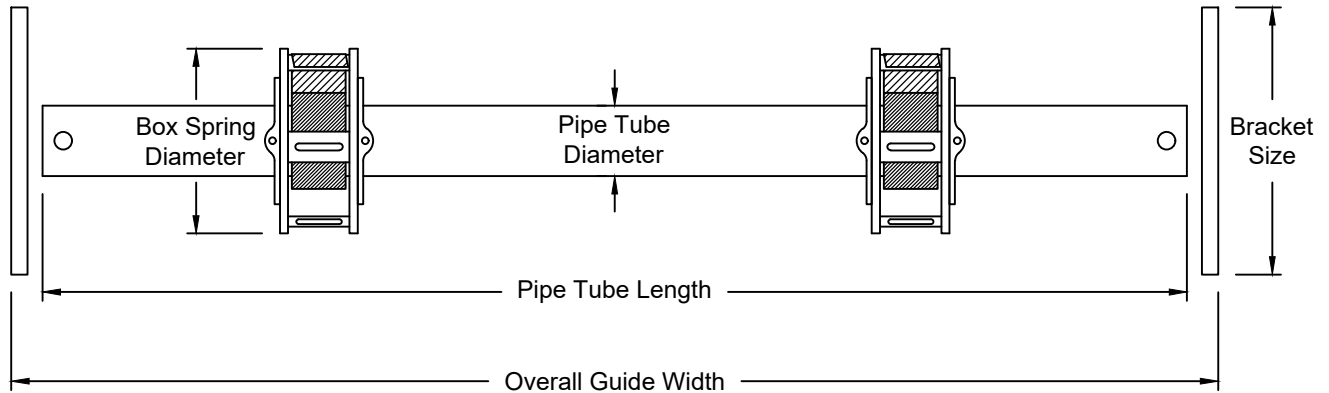
OVERHEAD DOORS, INC.



Box Spring Pipe Size Verification



Customer:	Date:
Order #:	Sales Rep:
Address:	Project:



****Note:** Spring box quantity shown for reference only. Amount supplied is dependent on door size.

Pipe Tube Length: _____ ft. _____ in.	Pipe Tube Diameter: _____ in. (Alpine Standard = 2 3/8")
Overall Guide Width: _____ ft. _____ in.	Box Spring Diameter: _____ in. (Alpine Standard = 8")
Height to Top of Bracket: _____ ft. _____ in.	Bracket Size: _____ in.
Mounting Location: (Interior) or (Exterior)	Slat Profile: Curtain or Grille (Specify Profile/Spacing): _____
Slat Material: (Aluminum) or (Galvanized)	Slat Gauge (i.e. .022=24ga, .028=22ga, .036=20ga): _____
Bottom Bar Type: (Double Angle) or (Single Angle) or (Alum. "T")	Bottom Bar Size and Material: _____
Operation: (Manual Push Up) or (Motorized Operator)	Existing Spring Box Quantity: _____
	Curtain and Bottom Bar Weight: _____ lbs.

MANUFACTURER OF QUALITY ROLLING STEEL DOORS
 8 HULSE ROAD, SUITE #1, EAST SETAUKET N.Y. 11733; TEL: (631) 473-9300; FAX: (631) 642-0800 TOLL FREE: (800) ALPINE-4

Date: 08/30/2021