



**Manufacturer of Superior Quality
Rolling Steel Doors Since 1972**

Counter Doors

Strong · Secure · Durable · Versatile



www.AlpineDoors.com



High Quality Counter Doors for Every Application

- Available with flat slats in various materials/gauges, finishes, and mounting configurations. Perforated and fire-rated models available.
- Wide range of operation choices, safety features, locking mechanisms, access controls, and other customization options.

Standard Usage	Fire Rated	Specialty
<ul style="list-style-type: none">• Ideal for counter-top openings such as pass-through windows, school cafeterias, concessions, parts counters, and much more• Flat, perforated or grille	<ul style="list-style-type: none">• Automatically closes to stop the spread of fire• 3/4, 1½, or 3-hr rated• Smoke rating optional• UL listed	<ul style="list-style-type: none">• Integral frame shutters• Fully assembled at our factory• Clean custom appearance without exposed edges• Built to your opening size requirements• Fire and smoke ratings optional



Slats



1.25" Flat



1.25" Perforated



1.75" - Wood Slat

Slats shown for profile reference only. For material and finish options, please see specification table.

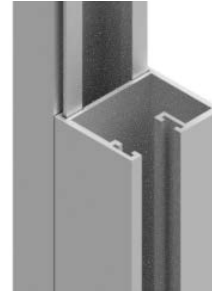
Guides



Extruded Aluminum (F)
For Counter Grilles Only.
(Shown without Bellmouths)



Steel Shutter Guide
(Shown without Bellmouths)



Aluminum Shutter Guide
(Shown without Bellmouths)



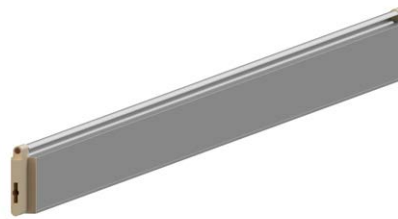
Wood Guide

Bottom Bars



Double Angle

Optional bottom bar astragal available



Tubular



Wood Rail

(Shown with Optional Handle)

Options & Accessories

Standard Material Finishes



Galvanized



**Anodized
Aluminum**



**304 No. 4
Stainless Steel**

Locks

- Slide locks
- Cylinder locks

Exo-Shield™ Powder Coating



Standard & custom RAL colors. Samples upon request. View custom colors at alpinedoors.com/standard-color-selection/

Standard Finish Coat Colors



Alpine Grey



Alpine Tan



Alpine White

Available on curtains (certain models), guides, bottom bars, and hoods.

NOTE: All colors shown are approximate.

Alpine's Counter

Standard Usage

Counter Shutter™



Counter Vision™



Counter Grille™



Wooden Shutter™



Guide Type	Formed Steel or Extruded Aluminum w/ Wool Pile Runner	Formed Steel or Extruded Aluminum w/ Wool Pile Runner	Extruded Aluminum w/ Wool Pile Runner	Wood, Extruded Aluminum
Pipe	Torsion Spring	Torsion Spring	Torsion Spring	Torsion Spring
Max Dimensions†	18'x8'	18'x8'	17'x8'	Up to 15.9'W / 12'H**
Curtain Material	Galvanized, Stainless or Aluminum Slats	Galvanized or Exo-Shield Powder Coated Slats	Rods: Galvanized Tube Spacers: Aluminum or Stainless Steel Links: Aluminum/Stainless	Red Oak, Birch, White Oak, Mahogany, Pine, Cherry, and Other Selected Hardwood Slats
Curtain Finish	Galvanized, Exo-Shield™ Powder Coat, Alpine Grey, White, Tan, Anodized Aluminum, Stainless Steel	Galvanized, Exo-Shield Powder Coat, Stainless Steel	See "Curtain Material" Above	Sanded, Stain, Varnish
Slat Dimensions	1.25" Flat	1.25" Flat	N/A	1.75"
Slate Gauge	20, 22	20	N/A	1/2" or 3/4"
Bottom Bar	Double Angle or Tubular	Double Angle or Tubular	Tubular	Wood Rail
Guide Finish	Exo-Shield Powder Coat, Anodized Aluminum, Stainless Steel	Exo-Shield Powder Coat, Anodized Aluminum, Stainless Steel	Exo-Shield Powder Coat, Anodized Aluminum, Stainless Steel	Sanded, Stain, Varnish, Aluminum Powder Coat Finished
Hood Finish	Galvanized, Exo-Shield Powder Coat, Anodized Aluminum, Stainless Steel	Galvanized, Exo-Shield Powder Coat, Anodized Aluminum, Stainless Steel	Galvanized, Exo-Shield Powder Coat, Anodized Aluminum, Stainless Steel	Finish-Grade Plywood Veneer
Life Cycle	20,000 Standard	20,000 Standard	20,000 Standard	20,000 Standard
Operation	Push Up, Hand Crank, or Electric Operator	Push Up, Hand Crank, or Electric Operator	Push Up, Hand Crank, or Electric Operator	Push Up, Hand Crank, or Electric Operator
Safety Accessories	Photo Eyes, Electric Sensing Edge	Photo Eyes, Electric Sensing Edge	Photo Eyes, Electric Sensing Edge	Photo Eyes, Electric Sensing Edge
Warranty	2 Year Limited	2 Year Limited	2 Year Limited	1 Year Limited

Applications - Alpine's rolling counter doors are designed for smaller counter-top openings such as service and pass through windows found in cafeterias, concession stands, pharmacies, schools, hospitals, hotels, stadiums/ arenas, offices, manufacturing facilities, etc.

Door Models

Fire Rated Specialty

Fire Shut® Auto Fire Shut® Split-Frame®



Available as Fire Rated

Formed Steel	Formed Steel	Formed Steel
Torsion Spring	Torsion Spring	Torsion Spring
13'-6"x12'	13'-6"x12'	11'x6'
Galvanized or Stainless Slats	Galvanized or Stainless Slats	Galvanized, Stainless or Aluminum Slats (for non fire-rated doors)
Galvanized, Exo-Shield Powder Coat, Alpine Grey, White, Tan, Stainless Steel	Galvanized, Exo-Shield Powder Coat, Alpine Grey, White, Tan, Stainless Steel	Galvanized, Exo-Shield Powder Coat, Alpine Grey, White, Tan, Anodized Aluminum*, Stainless Steel
1.25" Flat	1.25" Flat	1.25" Flat
22	22	22
Double Angle or Tubular	Double Angle or Tubular	Double Angle or Tubular
Exo-Shield Powder Coat, Stainless Steel	Exo-Shield Powder Coat, Stainless Steel	Exo-Shield Powder Coat, Stainless Steel
Galvanized, Exo-Shield Powder Coat, Stainless Steel	Galvanized, Exo-Shield Powder Coat, Stainless Steel	Galvanized, Exo-Shield Powder Coat, Anodized Aluminum*, Stainless Steel
20,000 Standard	20,000 Standard	20,000 Standard
Push Up, Hand Crank, or Electric Operator	Hand Crank, Hand Chain or Electric Operator	Push Up, Hand Crank, or Electric Operator
Photo Eyes, Electric Sensing Edge	Photo Eyes, Electric Sensing Edge	Photo Eyes, Electric Sensing Edge
1 Year Limited	2 Year Limited	2 Year Limited

*Not available for fire-rated shutters | **Not to exceed 100 sq ft total
†Maximum Square Footage May Apply

Fire-Rated Counter Doors



Fire-Shut® and Fire-Shut Split-Frame™ counter doors provide access control and security protection under normal use and will close automatically in the event of a fire, serving as a fire wall to contain spread of a fire by activating upon melting of a 165° fusible link.

Fire-Shut® Labeling

Alpine's counter fire door products have been UL classified and listed under the UL Product Category: Fire Shut Integral Frame Counter-Shutter Fire Door – GSVV.

Fire-Shut/Auto Fire-Shut:

- **Ratings:** 3/4 HR, 1-1/2 HR, 3 HR fire rating under UL File GSVV
- Classified for openings up to 13' 6" wide x 12' high

Split Frame:

- **Ratings:** 1-1/2 HR, 3/4 HR fire rating under UL File GSVV
- **Sizes:** Face Mounted – 10' 2" Wide x 5' High, up to 51 sq ft.
- **Between Jams:** 10' 10" Wide x 6' 4" High, up to 86 sq ft.

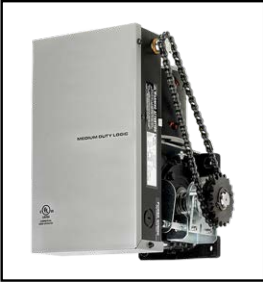
Smoke Rating (Optional)

The Smoke Fire-Shut® and Auto Smoke Fire-Shut utilize a vinyl smoke seal on the bottom bar, brush seals on the guides and lintel to stop the movement of smoke through the door. This enables smoke containment and prevents property damage and health risks.

Our Fire-Shutters are listed and/or classified by:

- Underwriter's Laboratories, Inc., (UL)
- Underwriter's Laboratories of Canada, Inc. (ULC)
- Tested in accordance with UL 10B (ANSI/UL 10B, NFPA 252, ASTM E152) and CAN/ULC-S104. Designed for the protection of openings in walls and partitions against fire when installed in accordance with NFPA 80.

Operators - Counter Shutters & Grilles



Redi-Shut®

- Gear-reduced jackshaft operator with a high starting torque
- Aux manual push-up
- Three button open-close-stop control station NEMA-1



Redi-Tube®

- Tubular metal door motor with a built-in hand crank overdrive
- Compact motor head

Operators - Auto Resettable Fire Rated Shutters



Redi-Reset® MC Chain

- Up by chain, down by cable
- Compatible with fusible links, cable, sash chain, and electronic release devices



Redi-Reset® MK

- Up by hand crank, down by cable
- Compatible with fusible links, cable, sash chain, and electronic release devices



Redi-Reset® FDCL

- For shutters up to 150 sq ft
- Heat sensor activated w/ fusible link option
- 72 hour battery backup system



Redi-Reset® FS

- Activation by alarm, power loss, or fusible link
- Solenoid actuated brake
- Obstruction cycling when equipped w/ monitored sensing device

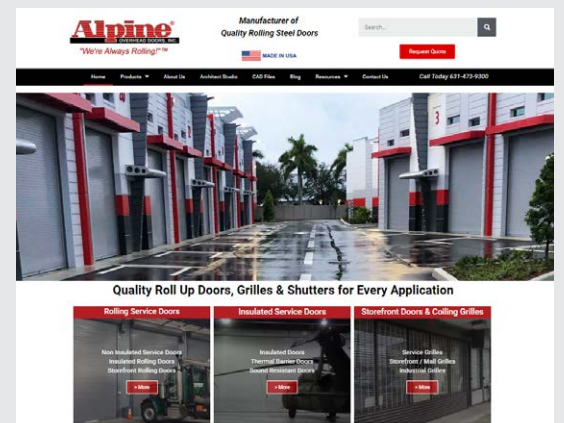


Redi-Reset® FGRL

- Internal lock sensor
- Fusible link activated, alarm close option
- Solenoid actuated brake

Visit Us Online at
www.AlpineDoors.com

- Online dealer portal with pricing
- Cut sheets and 3-part specifications for all standard products
- Standard drawings
- Online CAD drawing generator
- Product catalog



Alpine Overhead Doors, Inc.

8 Hulse Road • East Setauket, NY 11733

www.AlpineDoors.com • sales@alpinedoors.com

Phone: 1-631-473-9300 • Fax: 1-631-642-0800