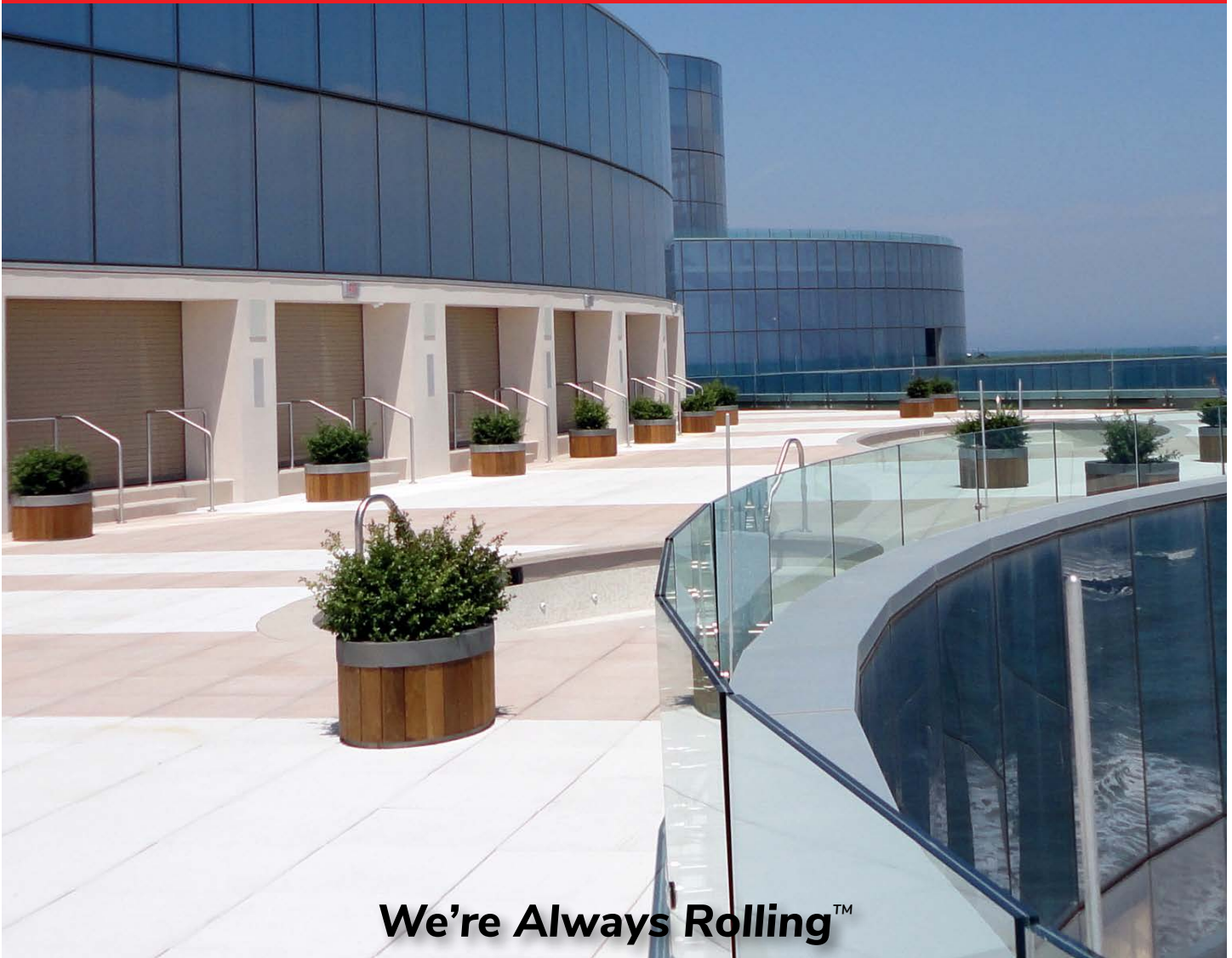




**Manufacturer of Superior Quality  
Rolling Steel Doors Since 1972**

# Storm-Rated Doors

**Hurricane • Tornado • FEMA • Smoke/Fire**



**We're Always Rolling™**



[www.AlpineDoors.com](http://www.AlpineDoors.com)



## Engineered for Extreme Weather Protection

**W**hen severe weather strikes, reliable protection is absolutely essential. Alpine's rolling storm door systems are engineered and constructed to protect against the devastating forces of high winds, hurricanes, tornadoes, flying debris, seismic shocks, fire, and smoke.

Our hurricane doors are approved for Miami Dade County's Florida Building Code's (FBC) demanding wind-load requirements. FEMA models are tested and certified to stringent **ICC 500 and FEMA P-361** standards. When nature is at its worst, you need the best defense: a superior quality storm door from Alpine Overhead Doors.

### Wide Range of Options to Meet Your Specifications

- All models have flat slats, available in various material gauges and finishes
- Insulated slats available in multiple front/back gauge configurations
- Fire-rated, smoke-rated, and STC-30 options available
- Flexible mounting configurations
- Range of operation choices, safety features, locking mechanisms, access controls, and other customization capabilities
- Fire doors are UL approved



## Slats



**2.75 Flat  
with Windlock**



**2.75"x7/8" Insulated Flat  
with Windlock**



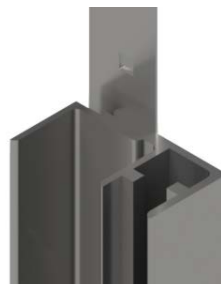
**3"x1" Insulated Flat  
with Double Windlock**

Slats shown for profile reference only. For material and finish options, please see specification table.

## Guides



**Structural Steel w/ Single Windbar**  
E or Z Mount (Shown without Bellmouths)



**Structural Steel Double Wall Mount w/ Double Windbar**  
TD Mount Only (Shown without Bellmouths)

## Bottom Bars



**Structural Steel Double Angle**  
(Shown without optional Neoprene Astragal)



**Structural Steel Insulated Double Angle**  
(Shown with optional Neoprene Astragal)

## Options & Accessories

### Standard Finish Coat Colors



Alpine Grey Alpine Tan Alpine White Galvanized

Available on curtains (certain models), guides, bottom bars, and hoods.

NOTE: All colors shown are approximate.

### Vision Lites



Provide visibility & light.  
Available only on certain models.

### Exo-Shield™ Powder Coating



Standard & custom RAL colors. Samples upon request. View custom colors at: [alpinedoors.com/standard-color-selection/](http://alpinedoors.com/standard-color-selection/)

### Locks

- Slide locks
- Cylinder/slide lock combo

### Sensing Devices

- Photo Safety Sensors, Electric Sensing Edge,
- Light Curtain Sensor

# Alpine's Storm-Rated Doors

## Non-Insulated

### Redi-Storm®

### Fire-Storm®

### Auto Fire-Storm®



<b>Fire Rated/Duration</b>	N/A	YES - 3/4 Hr, 1 Hr, 1-1/2 Hr, 3 Hr, or 4 Hr	YES - 3/4 Hr, 1 Hr, 1-1/2 Hr, 3 Hr, or 4 Hr
<b>Release Type</b>	N/A	Conventional	Auto Resettable
<b>Max Dimensions</b>	50'x40'	18'x16'	56'x30'
<b>Slat Dimensions</b>	2.75" Flat	2.75" Flat	2.75" Flat
<b>Slat Gauge</b>	16, 18, 20, 22	16, 18, 20, 22	16, 18, 20, 22
<b>Insulation Material</b>	N/A	N/A	N/A
<b>Life Cycle</b>	20,000 Standard Optional Higher Cycle Rating	20,000 Standard	20,000 Standard Optional Higher Cycle Rating
<b>Operation</b>	Push Up, Hand Chain, Hand Crank, or Electric Operator	Push Up, Hand Chain, Hand Crank, or Electric Operator	Hand Chain, Hand Crank, or Electric Operator
<b>Testing/Certifications</b>	Miami-Dade, FBC†	UL 10B/ULC-S104 (NFPA 80, NFPA 252, E152) Miami-Dade, FBC†	UL 10B/ULC-S104 (NFPA 80, NFPA 252, E152) Miami-Dade, FBC†
<b>Wind Load</b>	±60 PSF*	±60 PSF*	±60 PSF*
<b>Smoke Rating</b>	N/A	Option	Option
<b>Warranty</b>	2 Year Limited	1 Year Limited	2 Year Limited

## Applications


Alpine's rolling storm doors provide certified wind and impact protection for coastal and severe weather-prone regions. They are engineered to withstand hurricanes, tornadoes, and extreme winds. They are commonly installed in:

- Airports
- Schools
- Hospitals
- Data Centers
- Call Centers
- Government Facilities
- Power Facilities
- Office Buildings
- Retail Centers
- Storm Shelters
- Hotels
- Warehouses

...And any other high performance application



## Insulated

Redi-Storm® IMB	Fire-Storm® IMB	Auto Fire-Storm® IMB	FEMA-Tite™
			
N/A	YES - 3/4 Hr, 1 Hr, 1-1/2 Hr, 3 Hr, or 4 Hr	YES - 3/4 Hr, 1 Hr, 1-1/2 Hr, 3 Hr, or 4 Hr	N/A
N/A	Conventional	Auto Resettable	N/A
50'x40'	16'x14'	56'x30'	20'x20'
2.75"x7/8" Insulated Flat	2.75"x7/8" Insulated Flat	2.75"x7/8" Insulated Flat	3"x 1" Insulated Flat
18, 20, 22	18, 20, 22	18, 20, 22	16/16
Polystyrene or Polyurethane	Flame Retardant Fiber	Flame Retardant Fiber	Polystyrene or Polyurethane
20,000 Standard Optional Higher Cycle Rating	20,000 Standard Optional Higher Cycle Rating	20,000 Standard Optional Higher Cycle Rating	20,000 Standard Optional Higher Cycle Rating
Hand Chain, Hand Crank, or Electric Operator	Hand Chain, Hand Crank, or Electric Operator	Hand Chain, Hand Crank, or Electric Operator	Hand Chain or Electric Operator
Miami-Dade, FBC†	UL 10B/ULC-S104 (NFPA 80, NFPA 252, E152) Miami-Dade, FBC†	UL 10B/ULC-S104 (NFPA 80, NFPA 252, E152) Miami-Dade, FBC†	UL 10B/ULC-S104 ICC 500 FEMA P-361
±60 PSF*	±60 PSF*	±60 PSF*	250 MPH for Tornadoes
N/A	Option	Option	Option
2 Year Limited	1 Year Limited	2 Year Limited	2 Year Limited

\*Higher wind ratings available based on comparable analysis, but without Dade/FBC approval

†FBC NOA No. 23-1024.02

## General Specifications

**The following are common to all storm door models:**

**Guide Type** - Structural Steel

**Pipe** - Torsion Spring

**Curtain Finish** - Galvanized, Exo-Shield Powder Coat, Alpine Grey, White or Tan, or Stainless Steel

**Bottom Bar** - Structural Steel Double Angle with optional insulation and/or neoprene astragal

**Guide Finish** - Exo-Shield Powder Coat, Hot-Dipped Galvanized, Stainless Steel

**Hood Finish** - Galvanized, Exo-Shield Powder Coat, or Stainless Steel

**Safety Accessories** - Photo Safety Sensors, Electric Sensing Edge, Light Curtain Sensor

## Fire-Rated Models | Conventional vs Auto Resettable



### Conventional

- Activate via fusible link
- Offer the lowest upfront cost
- Require manual reset

### Auto Resettable

- Activate by power failure, fire alarm, fusible link, or test switch
- Automatically reset once the emergency clears, eliminating service calls

## Conventional Operators



### Redi-Lift® (H)

- Industrial-duty, V-belt hoist operator with aux hand chain
- 8"-9" per second average speed
- Three button open-close-stop control station NEMA-1



### Redi-Master® (GH)

- Heavy industrial-duty, gear-reduced operator with aux hand chain
- 8"-9" per second average speed
- Three button open-close-stop control station NEMA-1

## Resettable Operators (Fire Doors)



### Redi-Reset® MC Chain

- Up by chain, down by cable
- Compatible with fusible links, cable, sash chain, and electronic release devices



### Redi-Reset® MK

- Up by hand crank, down by cable
- Compatible with fusible links, cable, sash chain, and electronic release devices



### Redi-Reset® FDC

- For Fire-Doors 1/2 HP & 1 HP
- Obstruction cycling
- Thermal sensor and alarm activation
- Option for fusible link connection
- Battery backup system



### Redi-Reset® FDCL

- For shutters up to 150 sq ft
- Heat sensor activated w/ fusible link option
- 72 hour battery backup system



### Redi-Reset® FS

- Activation by alarm, power loss, or fusible link
- Solenoid actuated brake
- Obstruction cycling when equipped w/ monitored sensing device
- Inherent release device
- No auxiliary hand chain



### Redi-Reset® NF

- Fusible link activation of internal release and governor controlled closing
- Options for electronic release devices
- Solenoid actuated disc brake
- Up to 5HP
- NEMA 4/4X/7/9 options
- Auxiliary hand chain



Visit Us Online for Cut Sheets, 3-Part Specs, Drawings and more:

**[www.AlpineDoors.com](http://www.AlpineDoors.com)**



**Alpine Overhead Doors, Inc.**

8 Hulse Road • East Setauket, NY 11733

[www.AlpineDoors.com](http://www.AlpineDoors.com) • [sales@alpinedoors.com](mailto:sales@alpinedoors.com)

Phone: 1-631-473-9300